

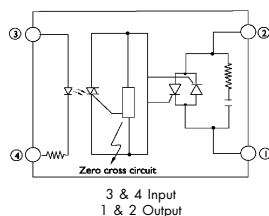
Din Ready SSR (240 VAC)
10 ~ 40 Amps

INPUT : AC Control,
OUTPUT : Back - to - Back SCR

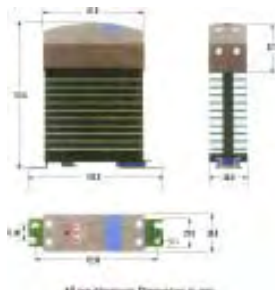
ERI®



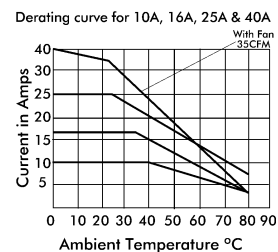
Schematic



Mechanical Drawing



Derating Curve



Highlights

- Input: AC Control • Output: Back-to-Back SCR (No configuration) • Opto Isolation 2500VAC (4000 V optional) • Zero voltage turn-on or Random turn-on • Built-in safety cover • Built in snubber for high DV/DT • DIN mount or back plate mounting • LED indicator showing relay 'ON' status

Electrical Specification @ TA = 25°C

Note: For Random T - On SSR, add letter 'KA' in place of 'A'.

ELECTRICAL SPECIFICATIONS			PRODUCT PART NUMBERS			
Parameter	Symbol	Unit	DIN 30A 241028	DIN 30A 241628	DIN 30A 242528	DIN 30A 244028
Control voltage range		Vac	90-280	90-280	90-280	90-280
Control current range		mA	4-25	4-25	4-25	4-25
Pick-up voltage		Vac	90	90	90	90
Drop-out voltage		Vac	10	10	10	10
Input resistance		K Ohms	16-25	16-25	16-25	16-25
RMS on-state current	I_T	A	10	16	25	40
Mains control Volt		Vac	24-240	24-240	24-240	24-240
Repetitive peak off state voltage	V _{drm}	V _{pk}	600	600	600	600
Zero turn-on voltage		Vac	35	35	35	35
On-state voltage drop	V _{tm}	Vac	1.6	1.6	1.8	1.8
Off-state leakage current @ rated voltage	I _{drm}	mA	5	5	5	5
Peak one cycle surge Current (Non-Rrep)	I _{TSM}	A	100	250	1000	1000
Holding current	I _H	mA	75	120	250	250
Critical rate of rise of off state Voltage	dv/dt	V/μs	200	250	500	500
Thermal resistance (junction to case)	R _{thjc}	°C/W	1.5	1.3	0.43	0.43
Frequency range	f	Hz	47 ~ 63	47 ~ 63	47 ~ 63	47 ~ 63
Storage temperature	T _s	°C	- 30 to + 100	- 30 to + 100	- 30 to + 100	- 30 to + 100
Operating temperature	T _o	°C	- 30 to + 80	- 30 to + 80	- 30 to + 80	- 30 to + 80
Turn-on time	T-on	ms	40	40	40	40
Turn-off time	T-off	ms	80	80	80	80
Fusing current	I _T ²	A ² S	72	128	3700	3700

*Our policy is one of continuous development and specifications are subject to change without notice. Warranty is limited to a period of one year for relay value only.

Series : DIN 30A

Input

Output

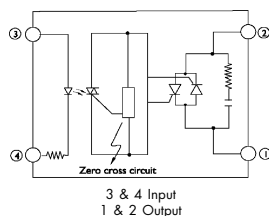
Din Ready SSR (660 VAC)
10 ~ 40 Amps

INPUT : AC Control,
OUTPUT : Back - to - Back SCR

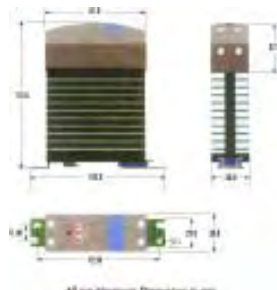
ERI®



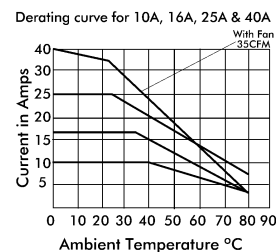
Schematic



Mechanical Drawing



Derating Curve



Highlights

• Input: AC Control • Output: Back-to-Back SCR (No configuration) • Opto Isolation 2500VAC (4000 V optional) • Zero voltage turn-on or Random turn-on • Builtin safety cover • Built in snubber for high DV/DT • DIN mount or back plate mounting • LED indicator showing relay 'ON' status

Electrical Specification @ TA = 25°C

Note: For Random T - On SSR, add letter 'KA' in place of 'A'.

ELECTRICAL SPECIFICATIONS			PRODUCT PART NUMBERS			
Parameter	Symbol	Unit	DIN 30A 661028	DIN 30A 661628	DIN 30A 662528	DIN 30A 664028
Control voltage range		Vac	90 - 280	90 - 280	90 - 280	90 - 280
Control current range		mA	4 - 25	4 - 25	4 - 25	4 - 25
Pick-up voltage		Vac	90	90	90	90
Drop-out voltage		Vac	10	10	10	10
Input resistance		K Ohms	16 - 25	16 - 25	16 - 25	16 - 25
RMS on-state current	I_T	A	10	16	25	40
Mains control volt		Vac	48 - 660	48 - 660	48 - 660	48 - 660
Repetitive peak off state voltage	V _{drm}	V _{pk}	1200	1200	1200	1200
Zero turn-on voltage		Vac	35	35	35	35
On-state voltage drop	V _{tm}	Vac	1 . 6	1 . 6	1 . 8	1 . 8
Off-state leakage current @ rated voltage	I _{drm}	mA	5	5	5	5
Peak one cycle surge Current (Non-Rrep)	I _{TSM}	A	100	250	1000	1000
Holding current	I _H	mA	75	120	250	250
Critical rate of rise of off state voltage	dv/dt	V/μs	200	200	700	700
Thermal resistance (junction to case)	R _{thjc}	°C/W	1.8	1.3	0.43	0.43
Frequency range	f	Hz	47 ~ 63	47 ~ 63	47 ~ 63	47 ~ 63
Storage temperature	T _s	°C	- 30 to + 100	- 30 to + 100	- 30 to + 100	- 30 to + 100
Operating temperature	T _o	°C	- 30 to + 80	- 30 to + 80	- 30 to + 80	- 30 to + 80
Turn-on time	T-on	ms	40	40	40	40
Turn-off time	T-off	ms	80	80	80	80
Fusing current	I _T ²	A ² S	72	128	3700	5000

*Our policy is one of continuous development and specifications are subject to change without notice. Warranty is limited to a period of one year for relay value only.

Series : DIN 30A

Input

Output