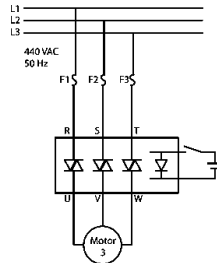


Three Phase SSR (480VAC)
10 ~ 40 Amps

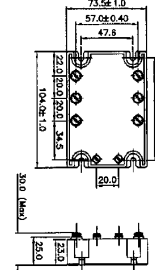
INPUT : DC Control,
OUTPUT : Triac



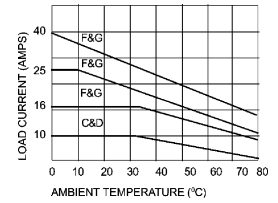
Schematic



Mechanical Drawing



Derating Curve



C & D = 0.5°C/W
F & G = 0.14°C/W

For Heatsink details refer to
"Recommended Heatsink" chart

Salient Features

- Opto Isolation 2500 VAC • Voltage Range 50 to 480 Vac
- Load Current 3x10A/16A/25A/40A • Reverse Polarity Protection

Electrical Specification @ TA = 25°C

Note: For Random T - On SSR, add letter 'K' in place of 'J'.

| ELECTRICAL SPECIFICATIONS | | | PRODUCT PART NUMBERS | | | |
|--|-----------------------------|----------|----------------------|-------------------|-------------------|-------------------|
| Parameter | Symbol | Unit | 012 JDA 481000 | 012 JDA 481600 | 012 JDA 482500 | 012 JDA 484000 |
| Control Volt Range | | Vdc | 3-32 | 3-32 | 3-32 | 3-32 |
| Control Curr Range | | m A | 80 | 80 | 80 | 80 |
| Pick-Up Voltage | | Vdc | 3.0 | 3.0 | 3.0 | 3.0 |
| Drop-Out Voltage | | Vdc | 1.0 | 1.0 | 1.0 | 1.0 |
| Input Resistance | | | Current Regulator | Current Regulator | Current Regulator | Current Regulator |
| Rms On State Current | I_T | A | 10 | 16 | 25 | 40 |
| Mains Control Volt | Vrms | Vac | 50-480 | 50-480 | 50-480 | 50-480 |
| Peak Off State Voltage | Vdrms | Vpk | 800 ~ 1200 | 800 ~ 1200 | 800 ~ 1200 | 800 ~ 1200 |
| Off State Leakage Curr | Idrm | mA | 10 | 10 | 10 | 10 |
| Zero T-On Voltage | | Vpk | 20 | 20 | 20 | 20 |
| On state Voltage Drop | V _{TM} | Vac | 1.6 | 1.6 | 1.85 | 1.85 |
| Peak one Cycle Surge Curr(Non Rep) | I _{TSM} | A | 100 | 160 | 250 | 350 |
| Holding Current | I _H | mA | 150 | 150 | 250 | 250 |
| Critical Rate of Rise of Off State Voltage | dv/dt | V/μs | 200 | 200 | 250 | 250 |
| Thermal Resistance | R _{TH} | °C/W | 3.5 | 2.5 | 1.5 | 1.0 |
| Frequency Range | f | Hz | 47 ~ 63 | 47 ~ 63 | 47 ~ 63 | 47 ~ 63 |
| Turn-On | T-On | ms | 10 | 10 | 10 | 10 |
| Turn-Off | T-Off | ms | 10 | 10 | 10 | 10 |
| Operating Temp | T Oper | °C | - 30 to + 80 | - 30 to + 80 | - 30 to + 80 | - 30 to + 80 |
| Fusing Current | I _T ² | A²S | 50 | 120 | 260 | 610 |

*Our policy is one of continuous development and specifications are subject to change without notice. Warranty is limited to a period of one year for relay value only.

Series : 012 J/K

Input

Output

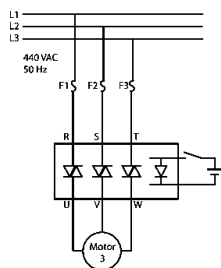
Three Phase SSR (480VAC)
50 ~ 90 Amps

INPUT : DC Control,
OUTPUT : Direct Copper Bonded Back - to - Back SCR

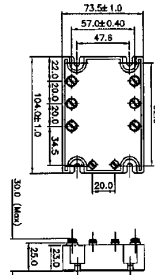
ERI®



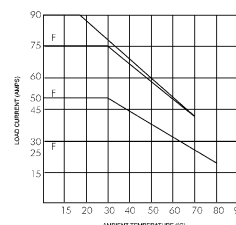
Schematic



Mechanical Drawing



Derating Curve



$$F = 0.14^{\circ}\text{C/W}$$

For Heatsink details refer to
"Recommended Heatsink" chart

Salient Features

- Opto Isolation 2500 VAC • Voltage Range 50 to 480 Vac • Load Current 3x50A/75A/90A
- Reverse Polarity Protection for DC Input Control.

Electrical Specification @ TA = 25°C

Note: For Random T - On SSR, add letter 'K' in place of 'J'.

| ELECTRICAL SPECIFICATIONS | | | PRODUCT PART NUMBERS | | |
|--|-----------------------------|------------------|----------------------|-------------------|-------------------|
| Parameter | Symbol | Unit | 012 SJDA 485000 | 012 SJDA 487500 | 012 SJDA 489000 |
| Control Volt Range | | Vdc | 4-32 | 4-32 | 4-32 |
| Control Curr Range | | m A | 8-80 | 8-80 | 8-80 |
| Pick-Up Voltage | | Vdc | 4.0 | 4.0 | 4.0 |
| Drop-Out Voltage | | Vdc | 1.0 | 1.0 | 1.0 |
| Input Resistance | | | Current Regulator | Current Regulator | Current Regulator |
| Rms On State Current | I_T | A | 50 | 75 | 90 |
| Mains Control Volt | Vrms | Vac | 50-480 | 50-480 | 50-480 |
| Peak Off State Voltage | Vdrms | Vpk | 800 ~ 1200 | 800 ~ 1200 | 800 ~ 1200 |
| Off State Leakage Curr | Idrms | mA | 10 | 10 | 10 |
| Zero T-On Voltage | | Vpk | 20 | 20 | 20 |
| On state Voltage Drop | V _{TM} | Vac | 2 | 2 | 2 |
| Peak one Cycle Surge Curr(Non Rep) | I _{TSM} | A | 500 | 1150 | 1150 |
| Holding Current | I _H | m A | 250 | 300 | 300 |
| Critical Rate of Rise of Off State Voltage | dv/dt | V/μs | 1000 | 1000 | 1000 |
| Thermal Resistance | R _{TH} | °C/W | 0.7 | 0.6 | 0.3 |
| Frequency Range | f | Hz | 47 ~ 63 | 47 ~ 63 | 47 ~ 63 |
| Turn-On | T-On | ms | 10 | 10 | 10 |
| Turn-Off | T-Off | ms | 10 | 10 | 10 |
| Operating Temp | T Oper | °C | - 30 to + 80 | - 30 to + 80 | - 30 to + 80 |
| Fusing Current | I _T ² | A ² S | 1250 | 5000 | 5000 |

*Our policy is one of continuous development and specifications are subject to change without notice. Warranty is limited to a period of one year for relay value only.

Series : 012 SJ/K

Input

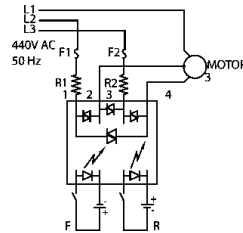
Output

Three Phase Motor Reversing SSR (480VAC) 10 ~ 40 Amps

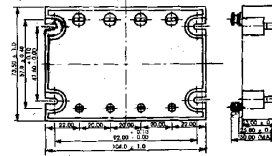
INPUT : DC Control,
OUTPUT : Triac



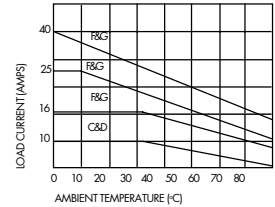
Schematic



Mechanical Drawing



Derating Curve



C & D = 0.5°C/W
F & G = 0.14°C/W

For Heatsink details refer to
"Recommended Heatsink" chart

Salient Features

- Opto Isolation 2500 VAC • Voltage Range 50 to 480 Vac • Load Current 2x10A/16A/25A/40A
- Reverse Polarity Protection for DC Input Control • Interlocking Protection included.

Electrical Specification @ TA = 25°C

Note: For Random T - On SSR, add letter 'K' in place of 'J'.

| ELECTRICAL SPECIFICATIONS | | | PRODUCT PART NUMBERS | | | |
|--|-----------------------------|----------|----------------------|-------------------|-------------------|-------------------|
| Parameter | Symbol | Unit | 012 RJDA 481000 | 012 RJDA 481600 | 012 RJDA 482500 | 012 RJDA 484000 |
| Control Volt Range | | Vdc | 4-32 | 4-32 | 4-32 | 4-32 |
| Control Curr Range | | m A | 80 | 80 | 80 | 80 |
| Pick-Up Voltage | | Vdc | 4.0 | 4.0 | 4.0 | 4.0 |
| Drop-Out Voltage | | mA | 1.0 | 1.0 | 1.0 | 1.0 |
| Input Resistance | | | Current Regulator | Current Regulator | Current Regulator | Current Regulator |
| Rms On State Current | I_T | A | 10 | 16 | 25 | 40 |
| Mains Control Volt | Vrms | Vac | 50-480 | 50-480 | 50-480 | 50-480 |
| Peak Off State Voltage | Vdrm | Vpk | 800 ~ 1200 | 800 ~ 1200 | 800 ~ 1200 | 800 ~ 1200 |
| Off State Leakage Curr | Idrm | mA | 10 | 10 | 10 | 10 |
| Zero T-On Voltage | | Vpk | 20 | 20 | 20 | 20 |
| On state Voltage Drop | V _{TM} | Vac | 1.6 | 1.6 | 1.85 | 1.85 |
| Peak one Cycle Surge Curr (Non Rep) | I _{TSM} | A | 100 | 160 | 250 | 350 |
| Holding Current | I _H | m A | 100 | 100 | 250 | 250 |
| Critical Rate of Rise of Off State Voltage | dv/dt | V/μs | 200 | 200 | 250 | 250 |
| Thermal Resistance | R _{TH} | °C/W | 3.5 | 2.5 | 1.5 | 1.0 |
| Frequency Range | f | Hz | 47 ~ 63 | 47 ~ 63 | 47 ~ 63 | 47 ~ 63 |
| Turn-On | T-On | ms | 10 | 10 | 10 | 10 |
| Turn-Off | T-Off | ms | 10 | 10 | 10 | 10 |
| Operating Temp | T Oper | °C | - 30 to + 80 | - 30 to + 80 | - 30 to + 80 | - 30 to + 80 |
| Fusing Current | I _T ² | A²S | 50 | 120 | 260 | 560 |

*Our policy is one of continuous development and specifications are subject to change without notice. Warranty is limited to a period of one year for relay value only.

Series : 012 RJ/K

Input

Output