

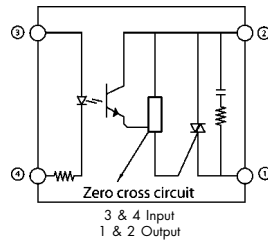
Single Phase SSR (240VAC)
10 ~ 40 Amps

INPUT : AC Control
OUTPUT : Triac output

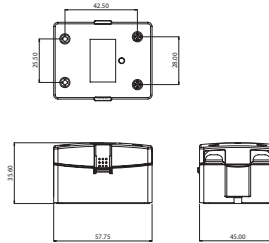
ERI®



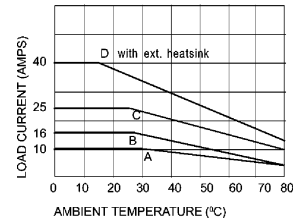
Schematic



Mechanical Drawing



Derating Curve



A = 3.2°C/W B = 1.0°C/W
C & D = 0.5°C/W

For Heatsink details refer to
"Recommended Heatsink" chart

Salient Features

- Opto Isolation 2500 VAC • Zero Voltage Turn On/Random Turn On • Output : NO/NC Configuration • Safety cover provision • Built-In Snubber • Chassis Mountable / DIN Mountable with Integral heatsink.

Electrical Specification @ TA = 25°C

Note: For Random T - On SSR, add letter 'K' in place of 'J'.

ELECTRICAL SPECIFICATIONS			PRODUCT PART NUMBERS			
Parameter	Symbol	Unit	001 JAA 331028	001 JAA 331628	001 JAA 332528	001 JAA 334028
Control Volt Range		Vac	90 ~ 280	90 ~ 280	90 ~ 280	90 ~ 280
Control Curr Range		m A	9 ~ 18	9 ~ 18	9 ~ 18	9 ~ 18
Pick-Up Voltage		Vac	90	90	90	90
Drop-Out Voltage		Vac	45	45	45	45
Input Resistance		K Ohms	33	33	33	33
Rms On State Current	I_T	A	10	16	25	40
Mains Control Volt	Vrms	Vac	24-330	24-330	24-330	24-330
Rep Peak Off State Voltage	Vdrms	Vpk	600	600	600	600
Off State Leakage Curr	Idrms	mA	10	10	10	10
Zero T-On Voltage		Vpk	25	25	25	25
On state Voltage Drop	V _{TM}	Vac	1.6	1.6	1.85	1.85
Peak one Cycle Surge Curr(Non Rep)	I _{TSM}	A	100	160	250	300
Holding Current	I _H	m A	75	75	150	150
Critical Rate of Rise of Off State Voltage	dv/dt	V/μs	200	200	250	250
Thermal Resistance	R _{TH}	°C/W	3.4	2.5	1.5	1.2
Frequency Range	f	Hz	47 ~ 63	47 ~ 63	47 ~ 63	47 ~ 63
Turn-On	T-On	ms	40	40	40	40
Turn -Off	T- Off	ms	80	80	80	80
Operating Temp	T Oper	°C	-30 to +80	-30 to +80	-30 to +80	-30 to +80
Fusing Current	I _T ²	A²S	50	120	300	400

*Our policy is one of continuous development and specifications are subject to change without notice. Warranty is limited to a period of one year for relay value only.

Series : 001 J/K

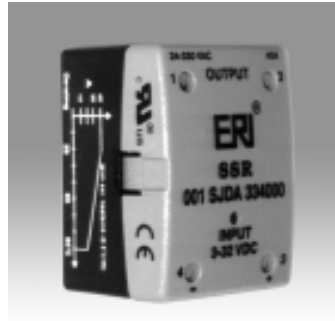
Input

Output

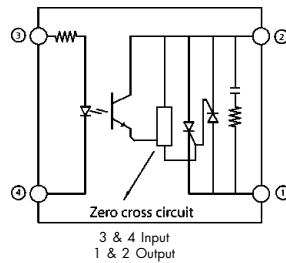
Single Phase SSR (240VAC)
10 ~ 40 Amps

INPUT : AC Control,
OUTPUT : Back-to-Back SCR

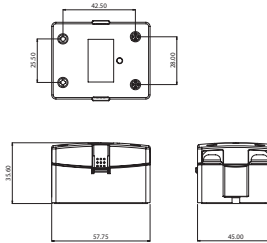
ERI®



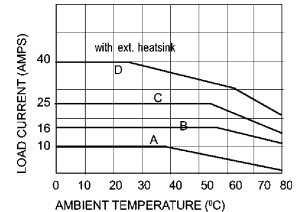
Schematic



Mechanical Drawing



Derating Curve



A = 3.2°C/W B = 1.0°C/W
C & D = 0.5°C/W

For Heatsink details refer to
"Recommended Heatsink" chart

Salient Features

- Opto Isolation 2500 VAC
- Zero Voltage Turn On/Random Turn On
- Output : NO/NC Configuration
- Suitable for inductive loads
- Built-In Snubber
- Safety cover provision
- Chassis Mountable / DIN Mountable with Integral heatsink.

Electrical Specification @ TA = 25°C

Note: For Random T - On SSR, add letter 'K' in place of 'J'.

ELECTRICAL SPECIFICATIONS			PRODUCT PART NUMBERS			
Parameter	Symbol	Unit	001 SJAA 331028	001 SJAA 331628	001 SJAA 332528	001 SJAA 334028
Control Volt Range		Vac	90-280	90-280	90-280	90-280
Control Curr Range		m A	9-18	9-18	9-18	9-18
Pick-Up Voltage		Vac	90	90	90	90
Drop-Out Voltage		Vac	45	45	45	45
Input Resistance		K Ohms	13(Typ)	13(Typ)	13(Typ)	13(Typ)
Rms On State Current	I_T	A	10	16	25	40
Mains Control Volt	V _{rms}	Vac	24-330	24-330	24-330	24-330
Peak Off State Voltage	V _{drm}	Vpk	600	600	600	600
Off State Leakage Curr	I _{drm}	mA	10	10	10	10
Zero T-On Voltage		Vpk	20	20	20	20
On state Voltage Drop	V _{TM}	Vac	1.6	1.6	1.6	1.6
Peak one Cycle Surge Curr(Non Rep)	I _{TSM}	A	100	160	250	400
Holding Current	I _H	m A	50	70	120	250
Critical Rate of Rise of Off State Voltage	dv/dt	V/μs	200	500	500	500
Thermal Resistance	R _{TH}	°C/W	2.0	1.6	1.0	0.88
Frequency Range	f	Hz	47 ~ 63	47 ~ 63	47 ~ 63	47 ~ 63
Turn-On	T-On	ms	40	40	40	40
Turn -Off	T- Off	ms	80	80	80	80
Operating Temp	T Oper	°C	-30 to +80	-30 to +80	-30 to +80	-30 to +80
Fusing Current	I _T ²	A²S	50	128	220	560

*Our policy is one of continuous development and specifications are subject to change without notice. Warranty is limited to a period of one year for relay value only.

Series : 001 SJ/K

Input

Output