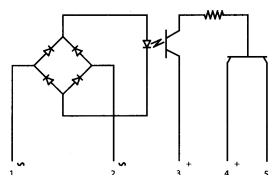
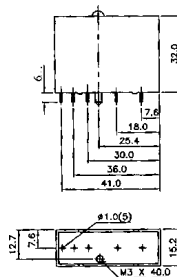


Schematic



1 & 2 AC Input, 3 Logic Supply,  
4 Output, 5 Common

Mechanical Drawing



### Highlights

- Compatible to TTL and CMOS logic
- LED indication
- Industrial standard package with hold-down screw
- PCB Mountable
- Pins are polarised

Electrical Specification @ TA = 25°C

ELECTRICAL SPECIFICATIONS		PRODUCT PART NUMBERS	
		104 AI 032528	
Parameter	Units	Min	Max
Input On Voltage	V(RMS)	180	280
Input Off Voltage	V(RMS)	0.0	15
Allowable Input Current for Output Off-State	mA(RMS)	0.0	0.25
Input Current at 240 VRMS	mA(RMS)		3.0
Frequency range	Hz	47	63
Input Impedence	K Ohms	64	96
Over Voltage	Vpk		600
Isolation Voltage	V(RMS)	2500	
<i>Note : All voltages referenced to Pin 5</i>			
Breakdown voltage (Pin 5)	VDC	30	
Output Current (Pin 4)	mA		25
On-State Voltage (Pin 4) (at 25 mADC)	VDC		0.4
Off-State Leakage (Pin 4) (at 30 VDC)	μA		100
Logic supply voltage (Pin 3)	VDC	3.5	6.0
Logic supply Current (Pin 3) No External LED	mA		8.0
Logic supply Current with External LED	mA		5.5
Turn-On Time	mS		20
Turn-Off Time	mS		20
Operating Temperature	°C	-30	80