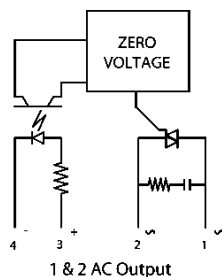
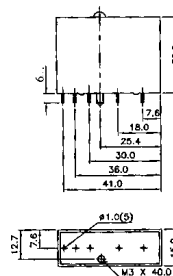




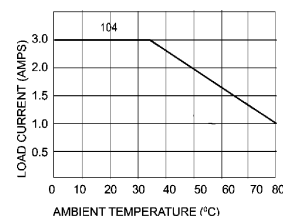
Schematic



Mechanical Drawing



Derating Curve



Highlights

- Compatible to TTL and CMOS logic
- Zero Voltage or Random turn on
- LED indication
- PCB Mountable
- Pins are polarised
- Industrial standard package with hold-down screw

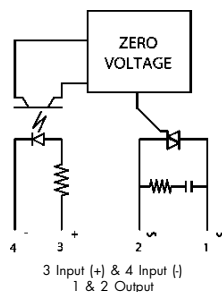
Electrical Specification @ TA = 25°C

ELECTRICAL SPECIFICATIONS		PRODUCT PART NUMBERS	
104 AO 240305			
Parameter	Units	Min	Max
Input On Voltage	VDC	3.0	8.0
Input Off Voltage	VDC	-8.0	1.0
Input Current at 5 VDC	mA		10
Input Resistance	Ohms	445	815
Isolation Voltage	V(RMS)	2500	
Load Current at 45°C	A(RMS)	0.05	3.0
Load Voltage	V(RMS)	24	280
Frequency Range	Hz	47	63
Surge Current Non-repetive (1 cycle)	Apk		80
Transient over-voltage	Vpk		600
On- state Voltage @ Rated Current	VRMS	1.5	
Off-State Leakage @ 240 VRMS	mA(RMS)		5
Off-State dv/dt	V/μs	200	
Turn-On Time (Next Zero Voltage	Cycle		1/2
Turn-Off Time (Next Zero current)	Cycle		1/2
Operating Temperature	°C	-30	80

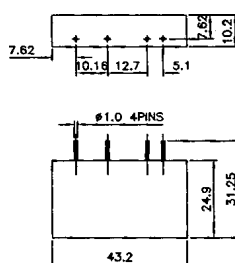


JDA241000

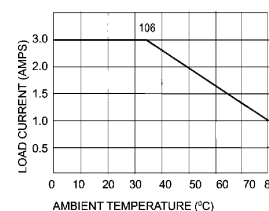
Schematic



Mechanical Drawing



Derating Curve



Highlights

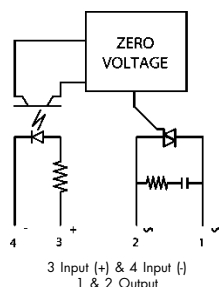
- Compatible to TTL logic
- Built in zero cross circuit
- Low profile module
- High Repetitive off state voltage
- Pins are polarised

Electrical Specification @ TA = 25°C

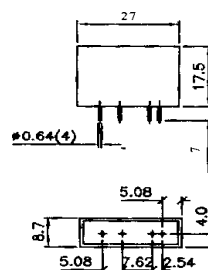
ELECTRICAL SPECIFICATIONS		PRODUCT PART NUMBERS			
		106 AO 240300		106 AO 480300	
Parameter	Units	Min	Max	Min	Max
Input On Voltage	VDC	3	32	3	32
Input Off Voltage	VDC	1	-	1	-
Input Current at 5 VDC	mA	-	12	-	12
Input Resistance	Curr. Reglr	Curr. Reglr	Curr. Reglr	Curr. Reglr	Curr. Reglr
Input Reverse voltage	VDC	32	1	32	1
Isolation Voltage	V(RMS)	-	4000	-	4000
Load Current at 45°C	A	0.05	3	0.05	3
Load Voltage	VRMS	24	330	24	480
Frequency Range	Hz	47	63	47	63
Surge Current None-repetive (1 cycle)	A	-	80	-	80
Transient over-voltage	Vpk	-	600	-	800
On- state Voltage @ Rated Current	VRMS	-	1.6	-	1.6
Off-State Leakage @ 240 VRMS	mA	-	5	-	5
Critical rate of rise of off state voltage (dv/dt)	V/μs	200		200	
Turn-On Time (Next Zero Voltage)	Cycle	-	1/2	-	1/2
Turn-Off Time (Next Zero current)	Cycle	-	1/2	-	1/2
Operating Temperature	°C	-30	80	-30	80



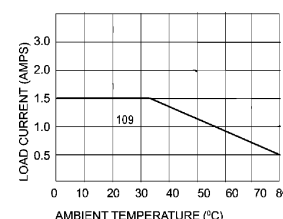
Schematic



Mechanical Drawing



Derating Curve



Highlights

- Compatible to TTL logic
- Built in zero cross circuit
- Mini Module
- High Repetitive off state voltage
- Pins are polarised

Electrical Specification @ TA = 25°C

ELECTRICAL SPECIFICATIONS		PRODUCT PART NUMBERS			
		109 AO 240205		001 JDA 331605	
Parameter	Units	Min	Max	Min	Max
Input On Voltage	VDC	4	6	4	6
Input Off Voltage	VDC	1	-	1	-
Input Current at 5 VDC	mA	-	30	-	30
Input Resistance	Ohms		130		130
Input Reverse voltage	VDC	-32	-	-32	-
Isolation Voltage	VRMS	-	4000	-	4000
Load Current at 45°C	A	0.05	2	-	16
Load Voltage	VRMS	24	330	24	330
Frequency Range	Hz	47	63	47	63
Surge Current Non-rep (1 cycle)	A	-	80	-	160
Transient over-voltage	Vpk	-	600	-	600
On- state Voltage @ Rated Current	VRMS	-	1.6	-	1.6
Off-State Leakage @ 240 VRMS	mA	-	5	-	5
Critical rate of rise of off state voltage (dv/dt)	V/μs	200	-	200	-
Turn-On Time (Next Zero Voltage)	Cycle	-	1/2	-	10
Turn-Off Time (Next Zero current)	Cycle	-	1/2	-	10
Operating Temperature	°C	-30	80	-30	80