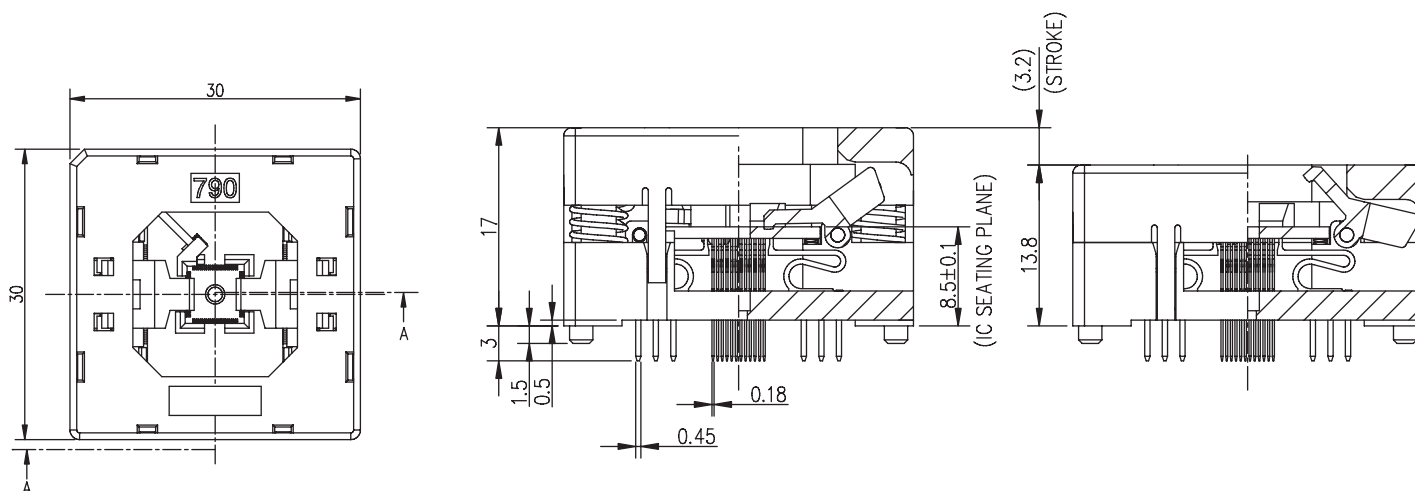




790 SERIES OPEN TOP QFN

- 0.4mm and 0.5mm pitch
- Low cost design using stamped cantilever contact
- Staggered, through hole tail design for BIB design consideration
- ACTIVE ALIGNMENT: Active IC guide feature improving on package alignment accuracy
- Optional thermal contact for package e-pad



DESCRIPTION & ORDERING INFORMATION

790 X X XXX - XXX X

Series: 790
 Row Number: X
 Pin Count: XXX
 Special Feature/Modification: XXX
 X: Lead Pitch:
 4 = 0.5mm
 6 = 0.40mm
 T = with Thermal Pin (consult factory)

MATERIALS & SPECIFICATIONS

- Body Materials: PES or Equivalent
- Contact Material: Beryllium Copper Alloy
- Contact Plating: Gold
- Contact Force: 20~25grams for leaded and lead-free devices
- Contact Resistance: <200 mΩ
- Temperature Rating: 150°C
- Durability: 10,000 cycles min.



790 SERIES OPEN TOP QFN

Pitch e (mm)	Pad Count	Pad Matrix	Package Size (mm)	Part Number
0.4	16	even	3 X 3	790-62016-101
	16	even	3 X 3	790-62016-101T
	20	odd	3 X 3	790-61020-101
	20	odd	3 X 3	790-61020-101T
	28	odd	4 X 4	790-61028-101
	28	odd	4 X 4	790-61028-101T
	32	even	4 X 4	790-62032-101
	32	even	4 X 4	790-62032-101T
	36	odd	5 X 5	790-61036-101
	36	odd	5 X 5	790-61036-101T
	40	even	5 X 5	790-62040-101
	40	even	5 X 5	790-62040-101T
	48	even	6 X 6	790-62048-101
	48	even	6 X 6	790-62048-101T
	48	even	7 X 7	790-62048-102
	48	even	7 X 7	790-62048-102T
	56	even	7 X 7	790-62056-101
	56	even	7 X 7	790-62056-101T
	64	even	8 X 8	790-62064-101
	64	even	8 X 8	790-62064-101T
	68	odd	8 X 8	790-61068-101
	68	odd	8 X 8	790-61068-101T
	72	even	9 X 9	790-62072-101
	72	even	9 X 9	790-62072-101T
	76	odd	9 X 9	790-61076-101
	76	odd	9 X 9	790-61076-101T
	80	even	9 X 9	790-62080-101
	80	even	9 X 9	790-62080-101T
	88	even	10 X 10	790-62088-101
	88	even	10 X 10	790-62088-101T
0.5	8	even	3 X 3	790-42008-101
	8	even	3 X 3	790-42008-101T
	10	odd	3 X 3	790-41010-101
	10	odd	3 X 3	790-41010-101T
	12	odd	3 X 3	790-41012-101
	12	odd	3 X 3	790-41012-101T
	16	even	3 X 3	790-42016-101
	16	even	3 X 3	790-42016-101T
	16	odd	3 X 3	790-41016-101
	16	odd	3 X 3	790-41016-101T
	20	even	3 X 4	790-42020-201
	20	even	3 X 4	790-42020-201T
	20	odd	4 X 4	790-41020-101
	20	odd	4 X 4	790-41020-101T
	24	even	4 X 4	790-42024-101
	24	even	4 X 4	790-42024-101T

continued...



790 SERIES OPEN TOP QFN

Pitch e (mm)	Pad Count	Pad Matrix	Package Size (mm)	Part Number
	28	odd	5 X 5	790-41028-101
	28	odd	5 X 5	790-41028-101T
	32	even	5 X 5	790-42032-101
	32	even	5 X 5	790-42032-101T
	32	even	6 X 6	790-42032-102
	32	even	6 X 6	790-42032-102T
	36	odd	6 X 6	790-41036-101
	36	odd	6 X 6	790-41036-101T
	40	even	6 X 6	790-42040-101
	40	even	6 X 6	790-42040-101T
	44	odd	7 X 7	790-41044-101
	44	odd	7 X 7	790-41044-101T
	44	even	7 X 7	790-42044-101
	44	even	7 X 7	790-42044-101T
	48	even	7 X 7	790-42048-101
	48	even	7 X 7	790-42048-101T
	52	odd	8 X 8	790-41052-101
	52	odd	8 X 8	790-41052-101T
	56	even	8 X 8	790-42056-101
	56	even	8 X 8	790-42056-101T
	60	odd	9 X 9	790-41060-101
	60	odd	9 X 9	790-41060-101T
	64	even	9 X 9	790-42064-101
	64	even	9 X 9	790-42064-101T
	68	odd	10 X 10	790-41068-101
	68	odd	10 X 10	790-41068-101T
	72	even	10 X 10	790-42072-101
	72	even	10 X 10	790-42072-101T
	80	even	12 X 12	790-42080-101
	80	even	12 X 12	790-42080-101T
	88	even	12 X 12	790-42088-101
	88	even	12 X 12	790-42088-101T
0.8	28	even	7 X 7	790-11028-101
	28	even	7 X 7	790-11028-101T
	28	even	7 X 7	790-11028-102
	28	even	7 X 7	790-11028-102T
0.95	6	odd	3 X 3	790-91006-101T
2.00	16	even	8 X 8	790-92016-101