

Insert- Thermoelement with flange, DIN 43 734 and connecting head shape A

Temperature:

protecting pipe -200 to +1150° C
connecting head -50 to +100° C

Thermoelement:

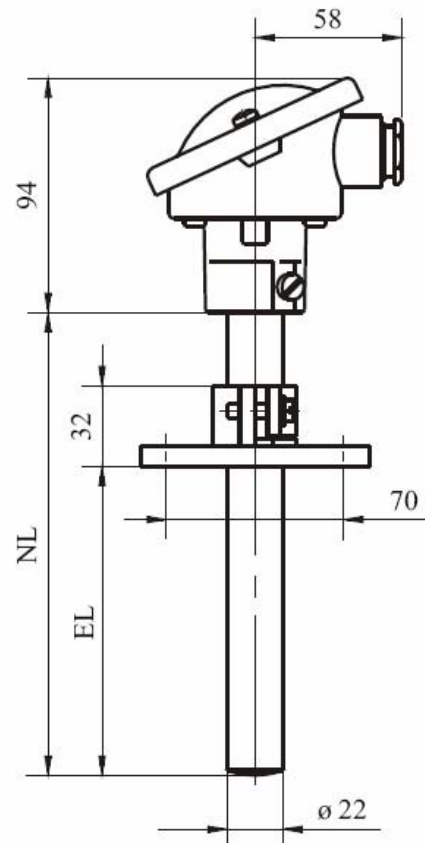
NiCr-Ni Type "K" DIN EN 60 584

Measuring insert:

exchangeable

Protecting pipe:

X10 CrAl 24
Material-Nr.: 1.4762



EL	NL	Thermopaar	Typ
100...460	500	1 x NiCr-Ni	UE-V11-M204
100...660	710	1 x NiCr-Ni	UE-V11-M205
100...960	1000	1 x NiCr-Ni	UE-V11-M206

Insert-Thermoelement with bayonet fixing Ø 12mm and surrounded stainless steel pressure equalizer pipe

Temperature:

protecting pipe -50 to +400° C
pressure equalizing pipe -50 to +400° C

Thermoelement:

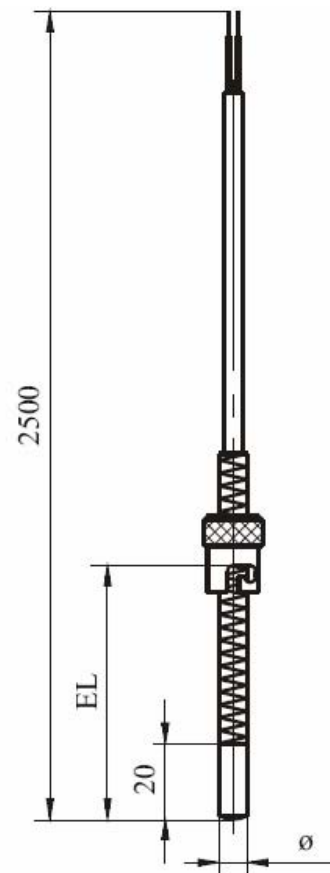
Fe-CuNi Type "L" DIN EN 43 710

Measuring insert:

fixed

Protecting pipe:

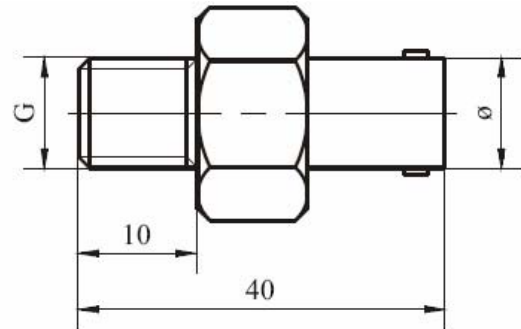
X6 CrNiMoTi 17 12 2
Material-Nr.: 1.4571



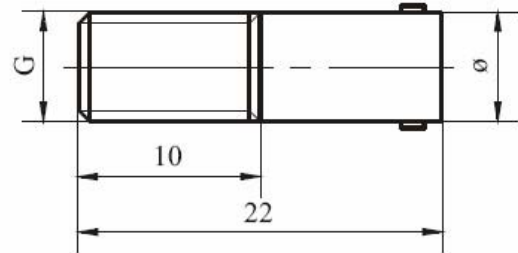
EL	Ø	Thermopaar	Typ
20...195	6	1 x Fe-CuNi	UE-V16-M001
20...195	8	1 x Fe-CuNi	UE-V16-M101
12	M 12 x 1		UE-G-09.20
12	M 12 x 1		UE-G-09.20

Correspondent to Insert-Thermoelement with bayonet fixing

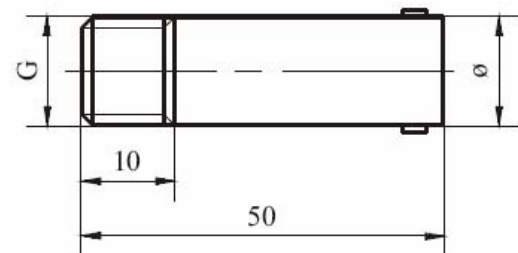
Coresspondent G-09.01
steel 9 SMnPb 28 K
material-nr.: 1.0718
nickel-plated



Coresspondent G-09.10
steel 9 SMnPb 28 K
material-nr.: 1.0718
nickel-plated



Coresspondent G-09.20
steel 9 SMnPb 28 K
material-nr.: 1.0718
nickel-plated



Ø	G	Typ
12	M 12 x 1	UE-G-09.01
12	M 12 x 1	UE-G-09.10
12	M 12 x 1	UE-G-09.20

Shroud- Thermoelement Fe-CuNi Type "L" , DIN 43 710

Temperature:

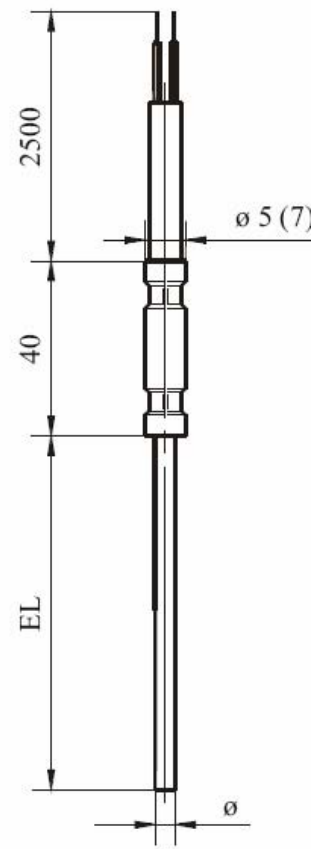
shroud line -200 to +1150° C
pressure equalizing pipe -50 to +200° C

Thermoelement:

NiCr-Ni Type "K" DIN EN 60 584

Shroud line:

Inconel 600, NiCr 15 Fe
Material-Nr.: 2.4816
ductile, protected against agitation,
temperature resistant



EL	Ø	Thermopaar	Typ
100	1,0	1 x NiCr-Ni	UE-V25-M001
100	1,5	1 x NiCr-Ni	UE-V25-M151
100	3,0	1 x NiCr-Ni	UE-V25-M301
100	6,0	1 x NiCr-Ni	UE-V25-M601

Shroud- Thermoelement NiCr-Ni Type "K" , DIN 60 584

Temperature:

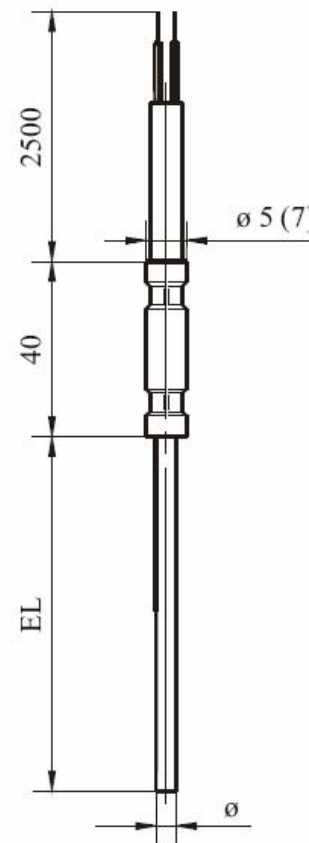
shroud line -200 to +800° C
pressure equalizing pipe -50 to +200° C

Thermoelement:

Fe-CuNi Type "L" DIN EN 43 710

Shroud line:

X6 CrNiTi 18 10
Material-Nr.: 1.4541
ductile, protected against agitation,
temperature resistant



EL	Ø	Thermopaar	Typ
100	1,0	1 x Fe-CuNi	UE-V20-M001
100	1,5	1 x Fe-CuNi	UE-V20-M151
100	3,0	1 x Fe-CuNi	UE-V20-M301
100	6,0	1 x Fe-CuNi	UE-V20-M601