

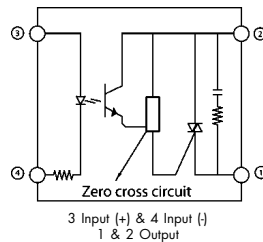
Single Phase SSR (240VAC)
10 ~ 40 Amps

INPUT : DC Control,
OUTPUT : Triac output

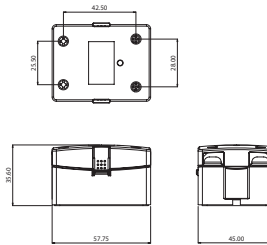
ERI®



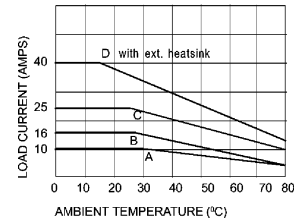
Schematic



Mechanical Drawing



Derating Curve



A = 3.2°C/W B = 1.0°C/W
C & D = 0.5°C/W

For Heatsink details refer to
"Recommended Heatsink" chart

Salient Features

- Opto Isolation 2500 VAC • Zero Voltage Turn On/Random Turn On • TTL/CMOS Compatible (Sink mode) • Output : NO/NC Configuration • Safety cover provision • Built-In Snubber • Chassis Mountable/DIN Mountable with Integral heatsink • Reverse Voltage Protection

Electrical Specification @ TA = 25°C

Note: For Random T - On SSR, add letter 'K' in place of 'J'.

ELECTRICAL SPECIFICATIONS			PRODUCT PART NUMBERS			
Parameter	Symbol	Unit	001 JDA 331000	001 JDA 331600	001 JDA 332500	001 JDA 334000
Control Volt Range		Vdc	3-32	3-32	3-32	3-32
Control Curr Range		m A	1-20	1-20	1-20	1-20
Pick-Up Voltage		Vdc	3.0	3.0	3.0	3.0
Drop-Out Voltage		Vdc	1.0	1.0	1.0	1.0
Input Resistance		K ohms	1.8	1.8	1.8	1.8
Rms On State Current	I_T	A	10	16	25	40
Mains Control Volt	V _{rms}	Vac	24-330	24-330	24-330	24-330
Rep Peak Off State Voltage	V _{drm}	Vpk	600	600	600	600
Off State Leakage Curr	I _{drm}	mA	10	10	10	10
Zero T-On Voltage		Vpk	25	25	25	25
On state Voltage Drop	V _{TM}	Vac	1.6	1.6	1.85	1.85
Peak one Cycle Surge Curr(Non Rep)	I _{TSM}	A	100	160	250	300
Holding Current	I _H	m A	75	75	150	150
Critical Rate of Rise of Off State Voltage	dv/dt	V/μs	200	200	250	250
Thermal Resistance	R _{TH}	°C/W	3.4	2.5	1.5	1.2
Frequency Range	f	Hz	47 ~ 63	47 ~ 63	47 ~ 63	47 ~ 63
Turn-On	T-On	ms	10	10	10	10
Turn -Off	T- Off	ms	10	10	10	10
Operating Temp	T Oper	°C	-30 to +80	-30 to +80	-30 to +80	-30 to +80
Fusing Current	I _T ²	A ² S	50	120	300	400

*Our policy is one of continuous development and specifications are subject to change without notice. Warranty is limited to a period of one year for relay value only.

Series : 001 J/K

Input

Output

Single Phase SSR (240VAC)
10 ~ 40 Amps

INPUT : DC Control,
OUTPUT : Back - to - Back SCR

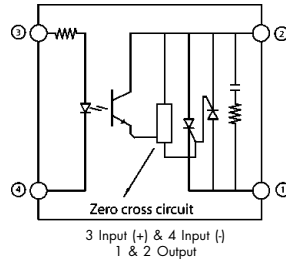
ERI®



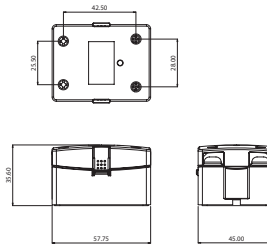
Series : 001 SJ/K



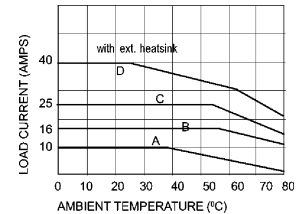
Schematic



Mechanical Drawing



Derating Curve



A = 3.2°C/W B = 1.0°C/W
C & D = 0.5°C/W

For Heatsink details refer to
"Recommended Heatsink" chart

Salient Features

- Opto Isolation 2500 VAC • Zero Voltage Turn On/Random Turn On • Reverse Voltage Protection; TTL/CMOS Compatible (Sink mode) • Output : NO/NC Configuration • Suitable for inductive loads
- Built-In Snubber • Safety cover provision • Chassis Mountable / DIN Mountable with Integral heatsink.

Electrical Specification @ TA = 25°C

Note: For Random T - On SSR, add letter 'K' in place of 'J'.

ELECTRICAL SPECIFICATIONS			PRODUCT PART NUMBERS			
Parameter	Symbol	Unit	001 SJDA 331000	001 SJDA 331600	001 SJDA 332500	001 SJDA 334000
Control Volt Range		Vdc	3-32	3-32	3-32	3-32
Control Curr Range		m A	1-25	1-25	1-25	1-25
Pick-Up Voltage		Vdc	3.0	3.0	3.0	3.0
Drop-Out Voltage		Vdc	1.0	1.0	1.0	1.0
Input Resistance			Current Regulator	Current Regulator	Current Regulator	Current Regulator
Rms On State Current	I_T	A	10	16	25	40
Mains Control Volt	Vrms	Vac	24-330	24-330	24-330	24-330
Peak Off State Voltage	Vdrms	Vpk	600	600	600	600
Off State Leakage Curr	Idrms	mA	10	10	10	10
Zero T-On Voltage		Vpk	20	20	20	20
On state Voltage Drop	V _{TM}	Vac	1.6	1.6	1.6	1.6
Peak one Cycle Surge Curr(Non Rep)	I _{TSM}	A	100	160	250	400
Holding Current	I _H	m A	50	70	120	250
Critical Rate of Rise of Off State Voltage	dv/dt	V/μs	200	500	500	500
Thermal Resistance	R _{TH}	°C/W	2.0	1.6	1.0	0.88
Frequency Range	f	Hz	47 ~ 63	47 ~ 63	47 ~ 63	47 ~ 63
Turn-On	T-On	ms	10	10	10	10
Turn -Off	T- Off	ms	10	10	10	10
Operating Temp	T Oper	°C	-30 to +80	-30 to +80	-30 to +80	-30 to +80
Fusing Current	I _T ²	A ² S	50	128	220	560

*Our policy is one of continuous development and specifications are subject to change without notice. Warranty is limited to a period of one year for relay value only.

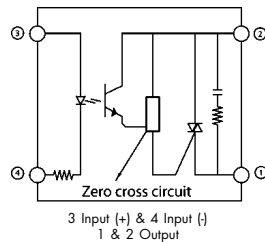
Single Phase SSR (240VAC)
10 ~ 40 Amps

INPUT : DC Control,
OUTPUT : Triac output

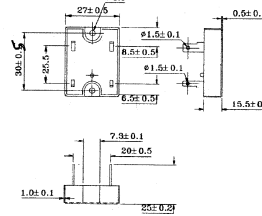
ERI®



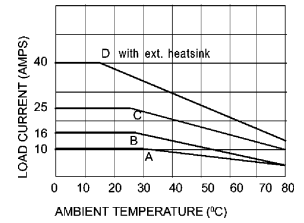
Schematic



Mechanical Drawing



Derating Curve



A = 3.2°C/W B = 1.0°C/W
C & D = 0.5°C/W

For Heatsink details refer to
"Recommended Heatsink" chart

Salient Features

- Opto Isolation 2500 VAC
- Zero Voltage Turn On/Random Turn On
- TTL/CMOS Compatible (Sink mode)
- Output : NO/NC Configuration
- Safety cover provision
- Built-In Snubber
- Chassis Mountable/DIN Mountable with Integral heatsink
- Reverse Voltage Protection

Electrical Specification @ TA = 25°C

Note: For Random T - On SSR, add letter 'K' in place of 'J'.

ELECTRICAL SPECIFICATIONS			PRODUCT PART NUMBERS			
Parameter	Symbol	Unit	018 JDA 331000	018 JDA 331600	018 JDA 332500	018 JDA 334000
Control Volt Range		Vdc	3-32	3-32	3-32	3-32
Control Curr Range		m A	1-20	1-20	1-20	1-20
Pick-Up Voltage		Vdc	3.0	3.0	3.0	3.0
Drop-Out Voltage		Vdc	1.0	1.0	1.0	1.0
Input Resistance		K ohms	1.8	1.8	1.8	1.8
Rms On State Current	I_T	A	10	16	25	40
Mains Control Volt	Vrms	Vac	24-480	24-480	24-480	24-480
Rep Peak Off State Voltage	Vdrms	Vpk	600~800	600~800	600~800	600~800
Off State Leakage Curr	Idrms	mA	10	10	10	10
Zero T-On Voltage		Vpk	25	25	25	25
On state Voltage Drop	V _{TM}	Vac	1.6	1.6	1.85	1.85
Peak one Cycle Surge Curr(Non Rep)	I _{TSM}	A	100	160	250	300
Holding Current	I _H	m A	75	75	150	150
Critical Rate of Rise of Off State Voltage	dv/dt	V/μs	200	200	250	250
Thermal Resistance	R _{TH}	°C/W	3.4	2.5	1.5	1.2
Frequency Range	f	Hz	47 ~ 63	47 ~ 63	47 ~ 63	47 ~ 63
Turn-On	T-On	ms	10	10	10	10
Turn -Off	T- Off	ms	10	10	10	10
Operating Temp	T Oper	°C	-30 to +80	-30 to +80	-30 to +80	-30 to +80
Fusing Current	I _T ²	A ² S	50	120	300	400

Series : 018 JK

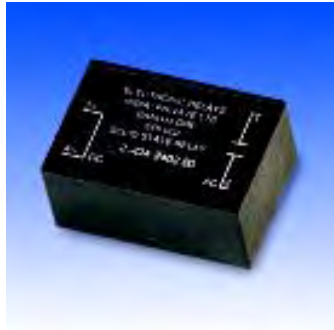
Input

Output

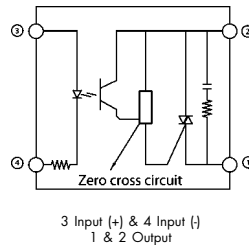
Single Phase SSR (240VAC)
2 Amps

INPUT : DC Control,
OUTPUT : Triac

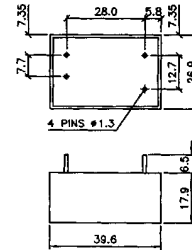
ERI®



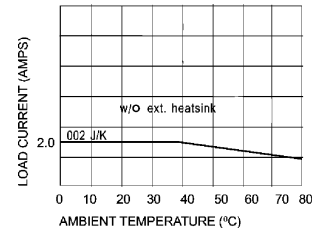
Schematic



Mechanical Drawing



Derating Curve



Salient Features

- Opto Isolation 2500 VAC • Zero Voltage Turn On/Random Turn On • Reverse Voltage Protection; TTL/CMOS Comptible (Sink mode) • Output : NO/NC Configuration • Built-In Snubber • PCB Mountable
- Pins are polarised

Electrical Specification @ TA = 25°C

Note: For Random T - On SSR, add letter 'K' in place of 'J'.

ELECTRICAL SPECIFICATIONS			PRODUCT PART NUMBERS
Parameter	Symbol	Unit	002 JDA 330200
Control Volt Range		Vdc	3-32
Control Curr Range		m A	1-30
Pick-Up Voltage		Vdc	3.0
Drop-Out Voltage		Vdc	1.0
Input Resistance		K Ohms	Current Regulator
Rms On State Current	I_T	A	2.0
Mains Control Volt	Vrms	Vac	24-330
Non-Rep Peak Off State Voltage	Vdrm	Vpk	600
Off State Leakage Curr	Idrm	mA	10
Zero T-On Voltage		Vpk	25
On state Voltage Drop	V_{TM}	Vac	1.6
Peak one Cycle Surge Curr(Non Rep)	I_{TSM}	A	100
Holding Current	I_H	mA	75
Critical Rate of Rise of Off State Voltage	dv/dt	V/ μ s	200
Thermal Resistance	R_{TH}	°C/W	2.0
Frequency Range	f	Hz	47 ~ 63
Turn-On	T-On	ms	10
Turn -Off	T-Off	ms	10
Operating Temp	T Oper	°C	-30 to +80
Fusing Current	I_T^2	A²S	50

*Our policy is one of continuous development and specifications are subject to change without notice. Warranty is limited to a period of one year for relay value only.

Series : 002 J/K

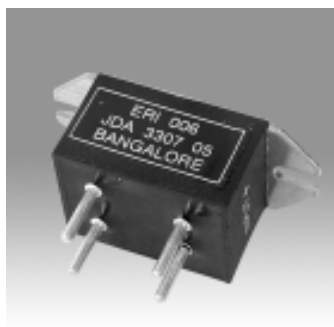
Input

Output

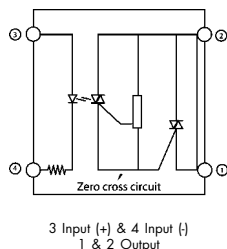
Single Phase SSR (240VAC)
2 ~ 7 Amps

INPUT : DC Control,
OUTPUT : Triac

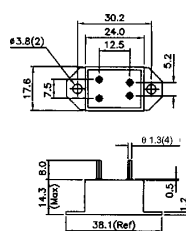
ERI®



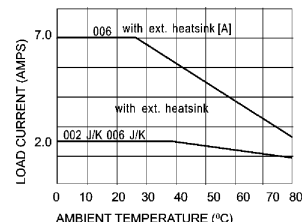
Schematic



Mechanical Drawing



Derating Curve



A = 3.2°C/W
For Heatsink details refer to
"Recommended Heatsink" chart

Salient Features

- Opto Isolation 2500 VAC • Zero Voltage Turn On/Random Turn On • Reverse Voltage Protection; TTL/CMOS Comptible (Sink mode) • PCB Mountable • Chassis Mountable.

Electrical Specification @ TA = 25°C

Note: For Random T - On SSR, add letter 'K' in place of 'J'.

ELECTRICAL SPECIFICATIONS			PRODUCT PART NUMBERS	
Parameter	Symbol	Unit	006 JDA 330205	006 JDA 330705
Control Volt Range		Vdc	5/12/24	5/12/24
Control Curr Range		m A	10	10
Pick-Up Voltage		Vdc	5/12/24	5/12/24
Drop-Out Voltage		Vdc	1/3/5	1/3/5
Input Resistance		K Ohms	0.5/1.2/2.2	0.5/1.2/2.2
Rms On State Current	I_T	A	2.0	7.0
Mains Control Volt	Vrms	Vac	24-330	24-330
Non-Rep Peak Off State Voltage	Vd _{rm}	Vpk	600	600
Off State Leakage Curr	I _{d_{rm}}	μA	100	100
Zero T-On Voltage		Vpk	25	25
On state Voltage Drop	V _{TM}	Vac	1.6	1.6
Peak one Cycle Surge Curr(Non Rep)	I _{TSM}	A	100	100
Holding Current	I _H	mA	75	75
Critical Rate of Rise of Off State Voltage	dv/dt	V/μs	200	200
Thermal Resistance	R _{TH}	°C/W	1.6	1.6
Frequency Range	f	Hz	47 ~ 63	47 ~ 63
Turn-On	T-On	ms	10	10
Turn -Off	T-Off	ms	10	10
Operating Temp	T Oper	°C	-30 to +80	-30 to +80
Fusing Current	I _T ²	A ² S	50	50

*Our policy is one of continuous development and specifications are subject to change without notice. Warranty is limited to a period of one year for relay value only.

Series : 006 J/K

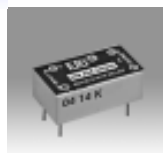
Input

Output

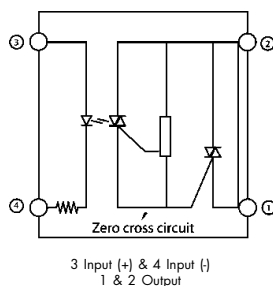
Single Phase SSR (240VAC)
2 ~ 4 Amps

INPUT : DC Control,
OUTPUT : Triac

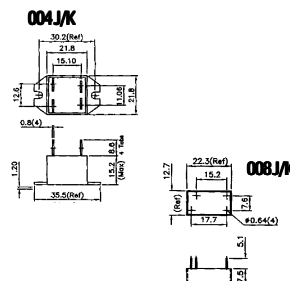
ERI®



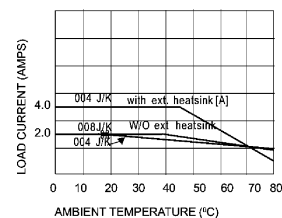
Schematic



Mechanical Drawing



Derating Curve



A = 3.2°C/W
For Heatsink details refer to
"Recommended Heatsink" chart

Salient Features

- Opto Isolation 2500 VAC • Zero Voltage Turn On/Random Turn On • Reverse Voltage Protection; TTL/CMOS Comptible (Sink mode) • PCB Mountable • Compatible to Std IC base(008/010 Series only).

Electrical Specification @ TA = 25°C

Note: For Random T - On SSR, add letter 'K' in place of 'J'.

ELECTRICAL SPECIFICATIONS			PRODUCT PART NUMBERS	
Parameter	Symbol	Unit	004 JDA 330405	008 JDA 330205
Control Volt Range		Vdc	5/12/24	5/12/24
Control Curr Range		m A	5-15	5-15
Pick-Up Voltage		Vdc	5/12/24	5/12/24
Drop-Out Voltage		Vdc	1/3/5	1/3/5
Input Resistance		K Ohms	0.5 - 2.0(Typ)	0.5 - 2.0(Typ)
Rms On State Current	I_T	A	4.0	2.0
Mains Control Volt	Vrms	Vac	24-330	24-330
State Voltage	Vdrm	Vpk	600	600
Off State Leakage Curr	Idrm	mA	10	10
Zero T-On Voltage		Vpk	25	25
On state Voltage Drop	V _{TM}	Vac	1.6	1.6
Peak one Cycle Surge Curr(Non Rep)	I _{TSM}	A	100	100
Holding Current	I _H	m A	75	75
Critical Rate of Rise of Off State Voltage	dv/dt	V/μs	200	200
Thermal Resistance	R _{TH}	°C/W	1.0	0.88
Frequency Range	f	Hz	47 ~ 63	47 ~ 63
Turn-On	T-On	ms	10	10
Turn-Off	T-Off	ms	10	10
Operating Temp	T Oper	°C	-30 to +80	-30 to +80
Fusing Current	I _T ²	A²S	50	50

*Our policy is one of continuous development and specifications are subject to change without notice. Warranty is limited to a period of one year for relay value only.

Series : 004/008 J/K

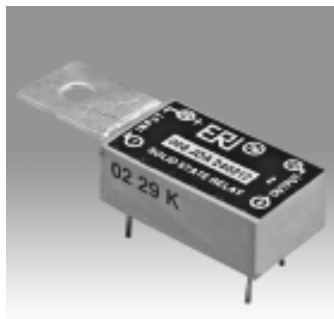
Input

Output

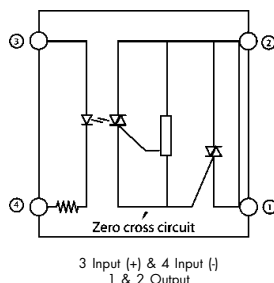
Single Phase SSR (240VAC)
3 Amps

INPUT : DC Control,
OUTPUT : Triac

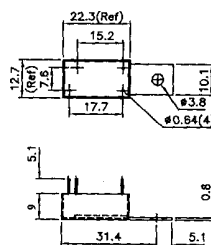
ERI®



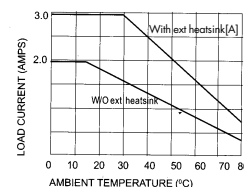
Schematic



Mechanical Drawing



Derating Curve



A = 3.2°C/W
For Heatsink details refer to
"Recommended Heatsink" chart

Salient Features

- Opto Isolation 2500 VAC • Zero Voltage Turn On/Random Turn On • Reverse Voltage Protection; TTL/CMOS Comptible (Sink mode) • PCB Mountable • Compatible to Std IC base(008/010 Series only).

Electrical Specification @ TA = 25°C

Note: For Random T - On SSR, add letter 'K' in place of 'J'.

ELECTRICAL SPECIFICATIONS			PRODUCT PART NUMBERS
Parameter	Symbol	Unit	010 JDA 330305
Control Volt Range		Vdc	5/12/24
Control Curr Range		m A	5-15
Pick-Up Voltage		Vdc	5/12/24
Drop-Out Voltage		Vdc	1/3/5
Input Resistance		K Ohms	0.5 - 2.0(Typ)
Rms On State Current	I_T	A	3.0
Mains Control Volt	Vrms	Vac	24-330
State Voltage	Vdrms	Vpk	600
Off State Leakage Curr	Idrms	mA	10
Zero T-On Voltage		Vpk	25
On state Voltage Drop	V _{TM}	Vac	1.6
Peak one Cycle Surge Curr(Non Rep)	I _{TSM}	A	100
Holding Current	I _H	m A	75
Critical Rate of Rise of Off State Voltage	dv/dt	V/μs	200
Thermal Resistance	R _{TH}	°C/W	0.88
Frequency Range	f	Hz	47 ~ 63
Turn-On	T-On	ms	10
Turn-Off	T-Off	ms	10
Operating Temp	T Oper	°C	-30 to +80
Fusing Current	I _T ²	A²S	50

*Our policy is one of continuous development and specifications are subject to change without notice. Warranty is limited to a period of one year for relay value only.

Series : 010 J/K

Input

Output