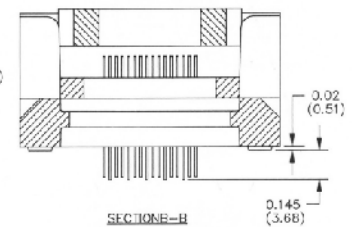
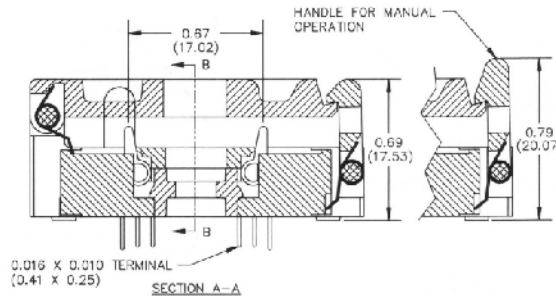
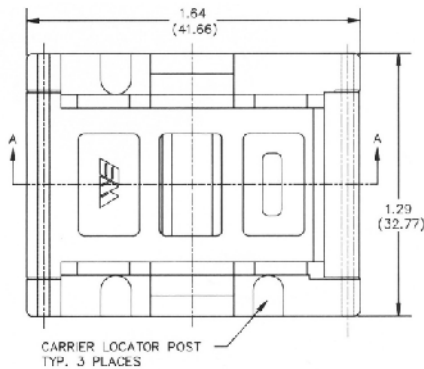
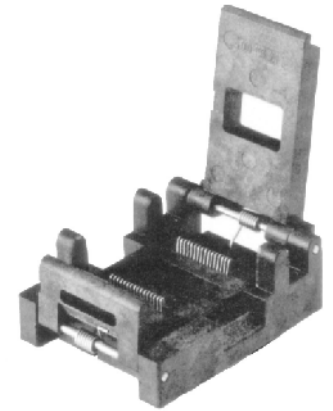




646 SERIES FOR 1¼" X 1¼" FLATPACK CARRIERS

- Latch features manual/automatic release
- Spinodal Alloy stamped contacts plated with 30 microinches of gold
- 28, 32, 36, 48 and 56-lead
- Preloaded high normal force contacts
- Temperature range up to 200°C



Part Number	Pin Count	Contact Pitch e (mm)	Contact Material	Contact Plating	Latch Operation	Notes
646-0282345	28	.050 (1.27)	Spinodal	Select Au	Manual	
646-3322345-002	28*	.030 (0.76)	Spinodal	Select Au	Auto	Consult Factory
646-3322345-003	28*	.030 (0.76)	Spinodal	Select Au	Manual	
646-3322345	32	.030 (0.76)	Spinodal	Select Au	Auto	
646-3322345-001	32	.030 (0.76)	Spinodal	Select Au	Manual	
646-4362345	36	.025 (0.64)	Spinodal	Select Au	Manual	
646-4482345	48	.025 (0.64)	Spinodal	Select Au	Manual	
646-4562345	56	.025 (0.64)	Spinodal	Select Au	Manual	

Note: See Engineering Advisory on hi-temp Spinodal applications at the end of this section

* Depopulated 32 lead

MATERIALS & SPECIFICATIONS

- Socket Body: UL 94V-0 rated high temperature material
- Contacts: Spinodal Alloy
- Contact Plating: 30 microinches of select gold over 50 microinches of nickel