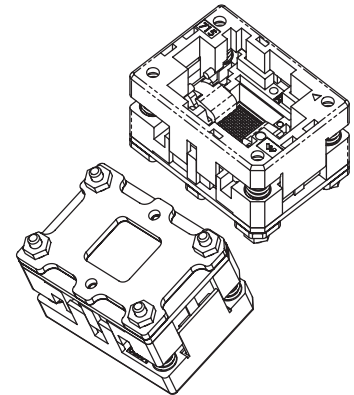
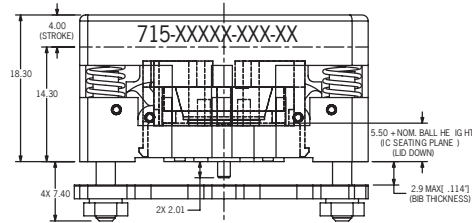
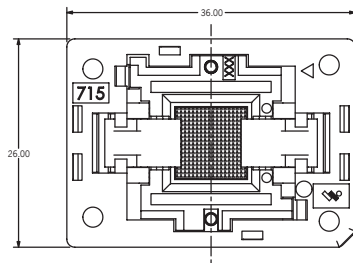
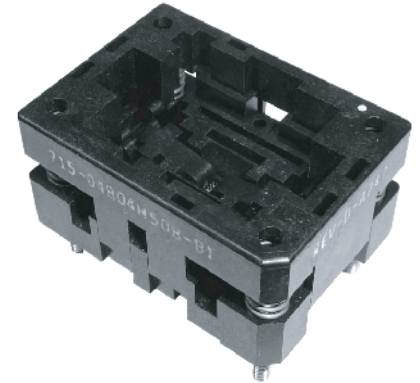


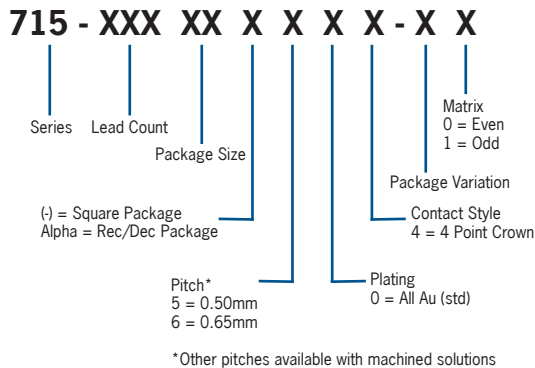


715 SERIES SOCKETS FOR CSP/BGA PACKAGES

- Open Top
- Compression surface mount
- Spring and probe contact
- 4 point crown tip interface on DUT solder ball
- Pointed probe maintains continuous contact to PCB
- Spring loaded floating locator plate
- Any pitch or pitch combination .4mm and greater
- Threaded inserts available



DESCRIPTION & ORDERING INFORMATION



MATERIALS & SPECIFICATIONS

- Body Materials: PEI, PES or Equivalent
- Contact Material: Beryllium Copper Alloy
- Contact Plating: Gold over Nickel
- Contact Force: 12-15 grams typical
- Contact Resistance: 350 mΩ typical
- Temperature Rating: Burn-in 125°C
- Higher Temperatures consult factory
- Durability: 10,000 cycles min.

| Pitch | Maximum Lead Count | Minimum Body size | Maximum Body size | Maximum Matrix |
|--------|--------------------|-------------------|-------------------|----------------|
| 0.50mm | 200 | 2.5 X 2.5 | 12 X 14 | 22 X 22 |
| 0.65mm | 200 | 2.5 X 2.5 | 12 X 14 | 21 X 21 |
| 1.00mm | 121 | 2.5 X 2.5 | 12 X 14 | 11 X 11 |

For all other pitches please consult factory



715 SERIES SOCKETS FOR CSP/BGA PACKAGES

| Pitch e (mm) | Package Size (mm) | Matrix | Part Number |
|--------------|-------------------|------------------|----------------------|
| 0.50 | 4.5X4.5 | 11X11 | 715P12106-504-XX |
| | 4X4 | 7X7 | 715-04904-504-XX |
| | 5X5 | 9X9 | 715-04805-504-XX |
| | 5X5 | 7X7 | 715-04811B5XX-XX |
| | 5X5 | 9X9 | 715-05205-504-XX |
| | 5X5 | 8X8 | 715-06405-5XX-XX |
| | 5X5 | 9X9 | 715-07105-5XX-XX |
| | 5X5 | 9X9 | 715-07105-504-XX |
| | 5X5 | 9X9 | 715-07105-504-XX |
| | 5X5 | 9X9 | 715-08105-5XX-XX |
| | 5X5 | 9X9 | 715-08105-504-XX |
| | 6X6 | 18X14 | 715-06010B504-XX |
| | 6X6 | 18X18 | 715-18010-5XX-XX |
| | 6X6 | 18X18 | 715-180010-5XX-XX-01 |
| | 6X6 | 14X10 | 715-06010D504-XX |
| | 6X6 | 18X14 | 715-06010D504-XX |
| | 6X6 | 4X10 | 715-04011B5XX-XX |
| | 6X6 | CUSTOM | 715-04811B5XX-XX |
| | 6X6 | 21X21 | 715-25611-504-XX |
| | 6X6 | CUSTOM | 715-08611D504-XX-01 |
| | 6X6 | CUSTOM | 715-08611D504-XX |
| | 6X6 | 21X21 | 715-24412-5XX-XX |
| | 6X6 | 22X22 | 715-27212-500-XX |
| | 6X6 | 21X21 | 715-28912-5XX-XX |
| | 7 X7 | 12X12 | 715-08007-5XX-XX |
| | 7X7 | 11X11 | 715-06407-504-XX |
| | 7X7 | 12X12 | 715-08407-5XX-XX |
| | 7X7 | 13X13 | 715-08407-504-XX |
| | 7X7 | 12X12 | 715-10407-504-XX |
| | 7X7 | 12X12 | 715-10007-504-XX |
| | 7X7 | 12X12 | 715-10407-504-XX |
| | 7X7 | 12X12 | 715-10807-5XX-XX |
| | 7X7 | 13X13 | 715-10807-504-XX |
| | 7X7 | 12X12 | 715-11207-5XX-XX |
| | 7X7 | 12X12 | 715-11207-504-XX |
| | 7X7 | 12X12 | 715-12807-5XX-XX |
| | 7X7 | 12X12 | 715-14407-5XX-XX |
| | 7X7 | 13X13 | 715-15307-504-XX |
| | 7X7 | 13X13 | 715-16907-504-XX |
| | 7.335X7.335 | 13X13 | 715-16407-5XX-XX |
| | 7.850X7.750 | 13X13 | 715-16407-5XX-XX-01 |
| | 7.7X9 | 10X4 | 715-04009A5XX-XX |
| 8X6 | 8X14 | 718-04408A504-XX | |
| 8X6 | CUSTOM | 715-05208A5XX-XX | |
| 8X8 | 13X13 | 715-08308-504-XX | |
| 8X8 | 14X14 | 715-09608-5XX-XX | |



715 SERIES SOCKETS FOR CSP/BGA PACKAGES

| Pitch e (mm) | Package Size (mm) | Matrix | Part Number |
|--------------|-------------------|------------------|---------------------|
| 0.50 | 8X8 | 14X14 | 715-10808-5XX-XX |
| | 8X8 | 14X14 | 715-10808-5XX-XX-01 |
| | 8X8 | 14X14 | 715-10808-5XX-XX |
| | 8X8 | 14X14 | 715-12008-504-XX |
| | 8X8 | 14X14 | 715-13208-5XX-XX |
| | 8x8 | 14X14 | 715-13208-504-XX |
| | 8X8 | 14X14 | 715-13208-504-XX |
| | 8X8 | 13X13 | 715-14408-5XX-XX |
| | 8X8 | 14X14 | 715-16008-5XX-XX |
| | 8X8 | 14X14 | 715-19608-5XX-XX |
| | 8.2X6 | CUSTOM | 715-05408A5XX-XX |
| | 9X7.7 | 4X10 | 715-04009A5XX-XX |
| | 9X7.7 | 4X10 | 715-04009A5XX-XX |
| | 9X7.7 | 4X10 | 715-04009A5XX-XX |
| | 9X8 | 8X14 | 715-04409DAO |
| | 9X9 | 15X15 | 715-13709-5XX-XX |
| | 9X9 | 15X15 | 715-13709-5XX-XX-01 |
| | 9X9 | 16X16 | 715-14809-5XX-XX |
| | 9X9 | 16X16 | 715-16909-5XX-XX |
| | 9X9 | 16X16 | 715-18809-504-XX |
| | 10X8 | 10X10 | 715-05606-504-XX |
| | 10X8 | 10X10 | 715-05606-504-XX |
| | 10.95X9.95 | 7X7 | 715-04804H504-XX |
| | 10X10 | 10 X 10 | 715-07206-5XX-XX |
| | 10X10 | 10X10 | 715-05606-5XX-XX |
| | 11X8 | 10X10 | 715-08406-504-XX |
| | 11X8 | 11X11 | 715-08806-5XX-XX |
| | 11X10 | 10X10 | 715-06406-5XX-XX |
| | 11X10 | 11X11 | 715-06406-5XX-XX |
| | 11X11 | 10X10 | 715-08406-5XX-XX |
| | 12X12 | 11X11 | 715-09606-5XX-XX |
| | 12X12 | 10X10 | 715-10006-504-XX |
| 12X12 | 11X11 | 715-12106-504-XX | |
| 0.65 | 6X6 | 8X8 | 715-06406-604-XX |
| | 7X4.5 | 10X6 | 715-05607A602-XX |
| | 7 x 7 | 9 x 9 | 715-07107-6XX-XX |
| | 8X8 | 11X11 | 715-09608-6XX-XX |
| | 12X12 | 17X17 | 715-24012-6XX-XX |
| 0.80 | 8X8 | 9X9 | 715-08108-804-XX |
| 1.00 | 6X7 | 5X5 | 715-02407D9XX-XX |
| | 6X12 | 5X9 | 715-04412B9XX-XX |
| | 7X4.5 | 5X3 | 715-01407A5XX-XX |
| | 10X9 | 8X8 | 715-06410C904-XX |
| | 13X10 | 8X8 | 715-06413A904-XX |

052109