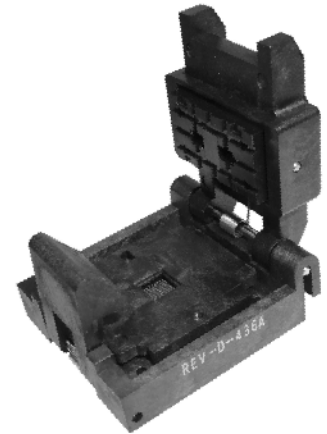




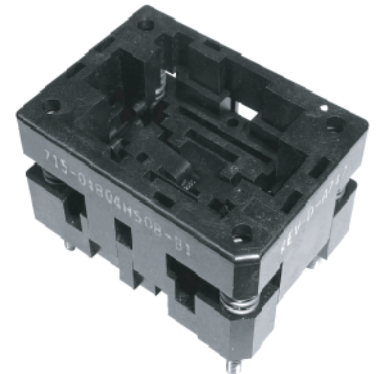
# 71XP SERIES HIGH PERFORMANCE OPEN TOP AND CLAMSHELL

- High performance spring probe contacts
- Low cost/high performance solution for lab and evaluation applications
- Low inductance contact
- Compression surface mount
- Open top or clamshell options
- Any pitch or pitch combination .4mm or greater
- Threaded inserts available

Current Rating: 2.0A Max  
 Self Inductance: 0.87 nH  
 Mutual Inductance: 0.69 nH  
 Bandwidth (Dielectric material: ULTEM1000): -1dB @ 6.00GHz  
 -3 @ 21.00GHz



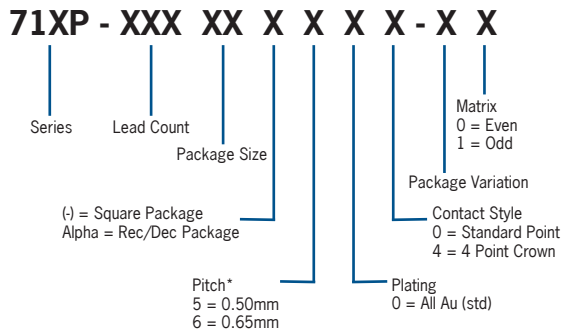
Lidded Clamshell Package Size (mm):  
 Below 1 X 1 and up to 14 X 16



Open Top Package Size (mm):  
 4 X 4 up to 12 X 14

Contact your local Sales Representative for implementing your device, or call 800.348.2505

## DESCRIPTION & ORDERING INFORMATION



\*Other pitches available with machined solutions

## MATERIALS & SPECIFICATIONS

- Body Materials: PEI, PES, or Equivalent
- Contact: Plunger - Hardened BeCu/Au plated  
 Barrel - Phosphor Bronze/Au plated  
 Spring - Stainless Steel/Au plated
- Contact Plating: Gold over Nickel
- Contact Force: 12-15 grams typical
- Contact Resistance: Less than 150 mΩ
- Temperature Rating: -55°C to 150°C
- Durability: 10,000 cycles min.