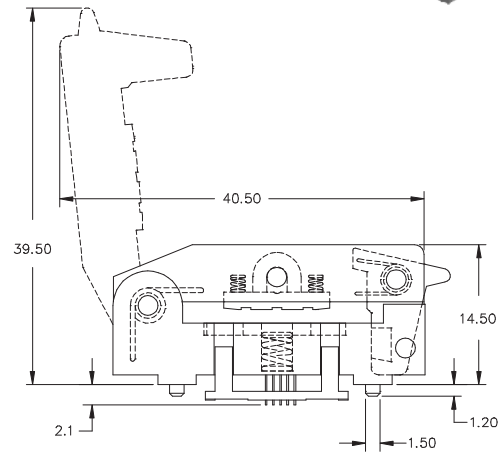
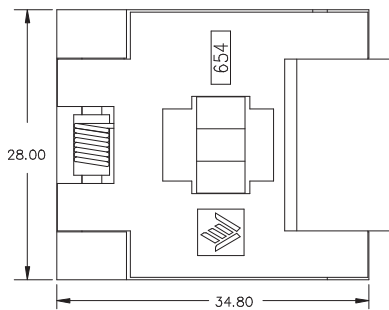
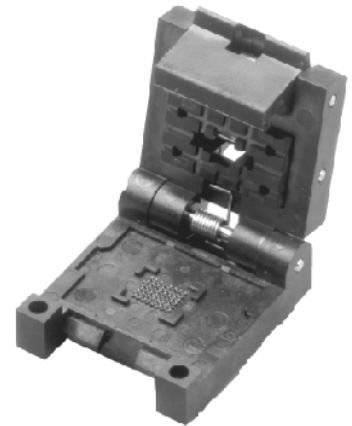


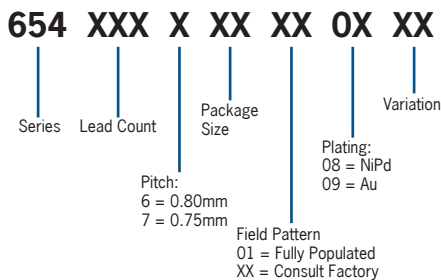


# 654 SERIES CSP/FBGA

- Clamshell design with patented “Y” contact
- Two points of contact with lead scrub
- Pivoting pressure pad for uniform pressure
- Modular design allows for easy customization
- Spring loaded ejection



## DESCRIPTION & ORDERING INFORMATION



## MATERIALS & SPECIFICATIONS

- Socket Body: LCP, PES, PEI or Equivalent
- Contact: Beryllium Copper Alloy
- Contact Plating: NiPd or Gold
- Contact Normal Force: 13 grams
- Contact Resistance: 100 mΩ max.
- Dielectric: 500V AC for 1 minute
- Temperature Rating: 150°C
- Insulation Resistance: 1000 MΩ @ 500V DC
- Durability: 10,000 cycles min.



# 654 SERIES CSP/FBGA

Pitch e (mm)	Lead Count	Package Size (mm)	Matrix	Ball Dia.(mm)	Ball Height (mm)	Part Number
0.75	40	7.71 X 10.15	5 X 8	0.30	0.30	654040728010811
	48	7.27 X 8.87	6 X 8	0.33	0.25 min.	654048728010816
	48	7.1 X 7.18	6 X 8	0.35	0.24 min.	654048728010823
	48	7 X 8	6 X 8	0.30	0.30	654048728010824
0.80	48	6 X 8	6 X 8	0.40	0.35	654048628010806
	48	5.95 X 8.95	6 X 8	0.40	0.35	654048631010806
	48	5.95 X 9.95	6 X 8	0.40	0.35	654048633010806
	48	7.95 X 8.95	6 X 8	0.40	0.35	654048632010806
	48	6 X 12	6 X 8	0.45	0.30	654048628010818
	48	8 X 11	6 X 8	0.45	0.30	654048629010818
	48	7 X 12	6 X 8	0.30	0.30	654048628010822
	56	9 X 13	4 X 14	0.50	0.40	654056628020940
	60	8 X 16	4 X 15	0.40	0.25 min.	654060628020822
	60	9.55 X 17.32	4 X 15	0.50	0.35	654060628020815
	60	8 X 16	4 X 15	0.40	0.25 min.	654060629020822
	64	8 X 8	8 X 8	0.50	0.40	654064608010813
	64	8 X 8	8 X 8	0.50	0.40	654064608010817
	72	8 X 8	9 X 9	0.50	0.40	654072608020837
	72	11 X 11	8 X 12	0.45	0.35	654072611020814
	73	9 X 9	9 X 9	0.50	0.35	654073609020809
	80	8 X 8	9 X 9	0.50	0.40	654080608020813
	81	8.1 X 8.1	9 X 9	0.45	0.35	654081608010814
	81	9 X 9	9 X 9	0.48	0.35	654081609010833
	104	13 X 13	13 X 13	0.50	0.30	654104613020925
	109	11 X 11	12 X 12	0.50	0.30	654109611020809
	112	10 X 10	11 X 11	0.50	0.40	654112610020817*
	112	10 X 10	11 X 11	0.50	0.40	654112610020821
	113	10 X 10	11 X 11	0.50	0.35	654113610020809
	120	9 X 13	9 X 14	0.50	0.40	654120628020807
	121	10 X 10	11 X 11	0.45	0.35	654121610010824
	126	9 X 13	9 X 14	0.50	0.40	654126628010931
	128	11 X 11	12 X 12	0.50	0.40	654128612020817
	144	12 X 12	13 X 13	0.50	0.40	654144612020807
	144	12 X 12	13 X 13	0.50	0.40	654144612020907
	144	12 X 12	13 X 13	0.50	0.40	654144612020817*
	168	12 X 12	14 X 14	0.50	0.40	654168612020913
169	12 X 12	13 X 13	0.50	0.40	654169612010907	