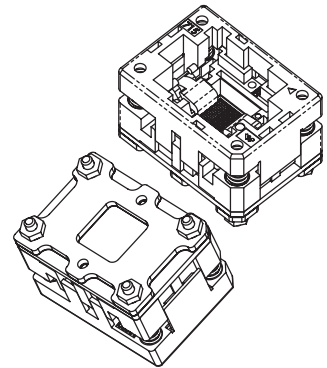
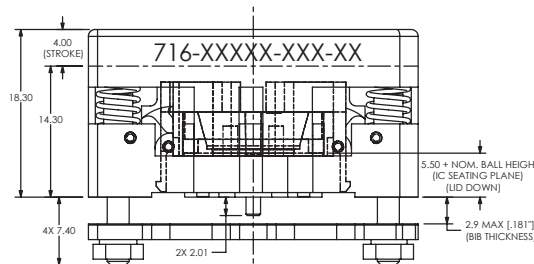
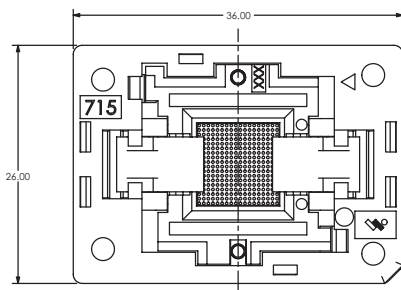
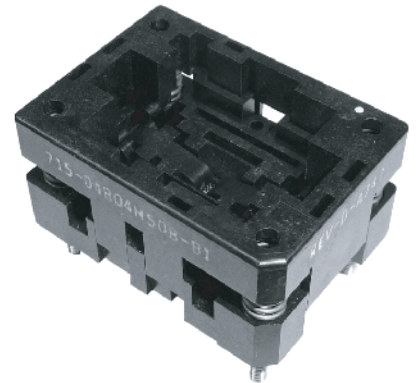


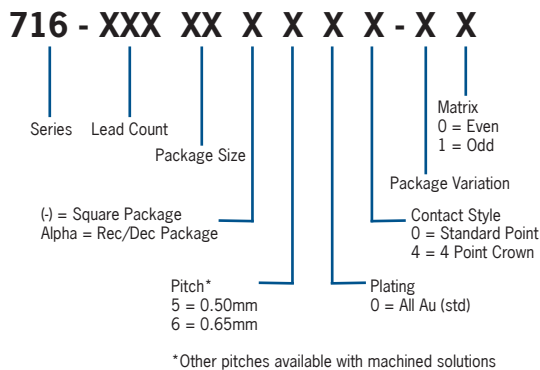


716 SERIES SOCKETS FOR QFN/LGA PACKAGES

- Open Top
- Compression surface mount
- Spring and probe contact
- Pointed probe contacts DUT pad
- Pointed probe maintains continuous contact to PCB
- Spring loaded locator plate
- Any pitch or pitch combination .4mm and greater
- Threaded inserts available



DESCRIPTION & ORDERING INFORMATION



MATERIALS & SPECIFICATIONS

- Body Materials: PEI, PES or Equivalent
- Contact Material: Beryllium Copper Alloy
- Contact Plating: Gold over Nickel
- Contact Force: 12-15 grams typical
- Contact Resistance: 350 mΩ typical
- Temperature Rating: Burn-in 125°C
- Higher Temperatures consult factory
- Durability: 10,000 cycles min.

Pitch	Maximum Lead Count	Minimum Body size	Maximum Body size	Maximum Matrix
0.50mm	200	2.5 X 2.5	12 X 14	22 X 22
0.65mm	200	2.5 X 2.5	12 X 14	21 X 21
1.00mm	121	2.5 X 2.5	12 X 14	11 X 11

For all other pitches please consult factory



716 SERIES SOCKETS FOR QFN/LGA PACKAGES

Pitch e (mm)	Package Size (mm)	Matrix	Part Number
0.50	5x5	9x9	716-06505-500-XX
	6X6	10X10	716-05606B5XX-XX
	7.7X9	10X4	716-04009A500-XX
	8X8	14X14	716-10808-500-XX
	8X8	14X14	716-12008-500-XX
	8X8	14X14	716-12408-500-XX
	8X8	13X13	716-12808-500-XX
	8X8	14X14	716-13208-500-XX
	8X8	13X13	716-14408-500-XX
	8X8	15X15	716-14408-500-XX
	9X7.7	4X10	716-04009A500-XX
	9X9	16X16	716-12809-5XX-XX
	9X9	16X16	716-14809-5XX-XX
	0.65	9X6	12X8
0.80	10X14	8X12	716-07214A800-XX
	6.4X10.9	5X11	716-04510A80X-XX
	8X14	8X12	716-07214B800-XX
0.90	12X12	6X2	716-03612-W00-XX-01