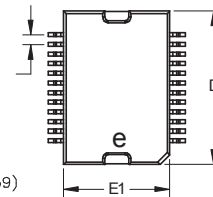
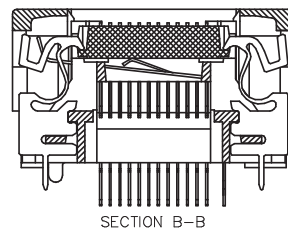
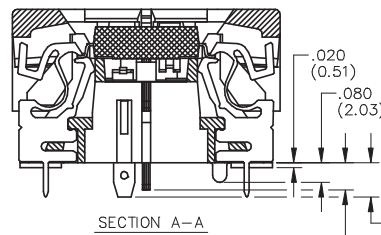
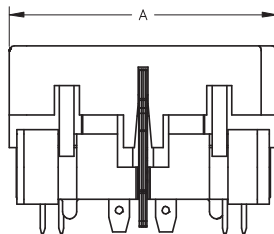
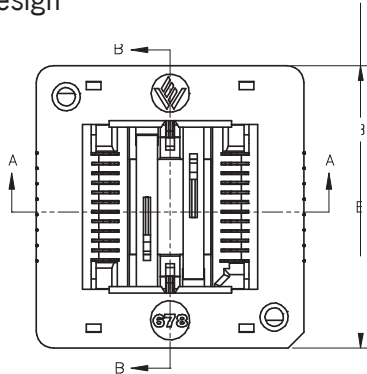
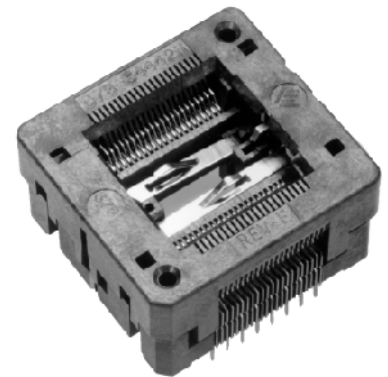




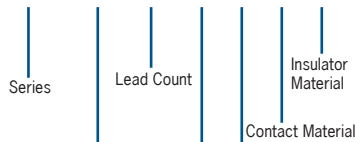
678 SERIES HSOP FOR SMALL OUTLINE "HEAT SLUG" PACKAGES

- "Dual Pinch" highly reliable contacts
- Separate contacts for interfacing with heat slug
- Open top, zero insertion force for automatic loading
- Compact size for high board density
- Consult factory for RoHS compliant version
- Thru hole design



DESCRIPTION & ORDERING INFORMATION

678 - X XX X X X X



Heat Sink Contacts:
 1 = Top contacts only
 2 = No contacts
 3 = Top & bottom contacts

MATERIALS & SPECIFICATIONS

- Socket Body: PEI or Equivalent
- Contact: Beryllium Copper Alloy
- Contact Plating: Gold over Nickel
- Contact Normal Force: 30 grams
- Contact Resistance: 30 mΩ
- Dielectric: 600V AC for 2 minute
- Temperature Rating: 150°C
- Insulation Resistance: 1000 MΩ @ 100V DC
- Durability: 5,000 cycles min.

Lead Count	Pitch e (mm)	Package Dimensions (mm)			Part Number	Socket Dimensions (mm)	
		Width (E1)	Lead Tip to Tip (E)	Length (D)		Length (A)	Width (B)
20	1.27	11.00	14.20	15.90	678-X201211	29.31	27.76
24	1.00	11.00	14.20	15.90	678-X242211	29.31	27.76
30	0.80	11.00	14.20	15.90	678-X303211	29.31	27.76
36	0.65	11.00	14.20	15.90	678-X364211	29.31	27.76
44	0.65	11.00	14.20	15.90	678-X444211	29.31	27.76