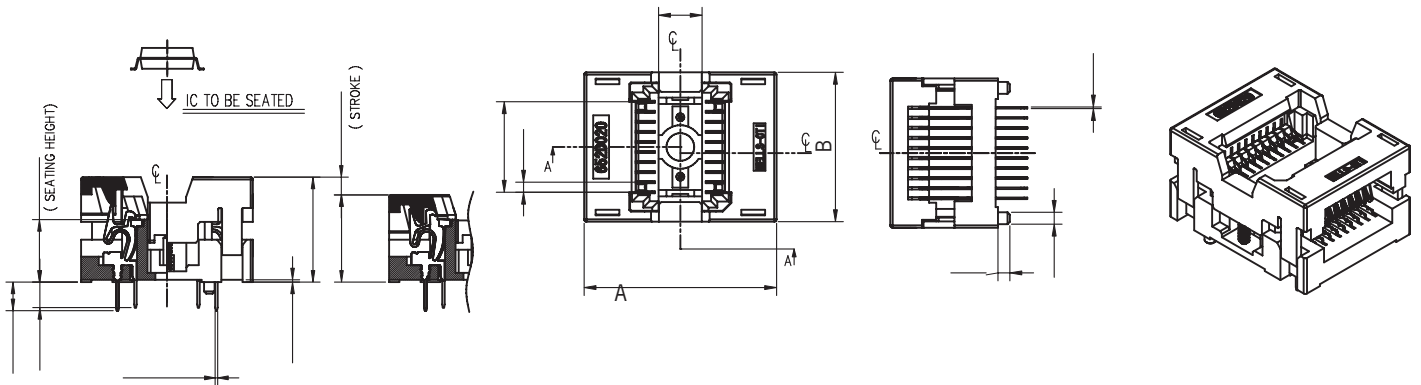
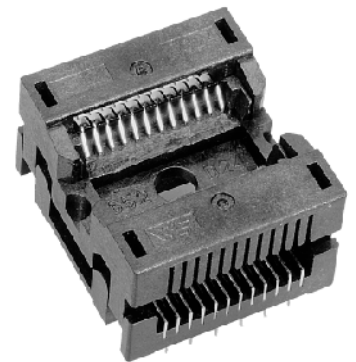




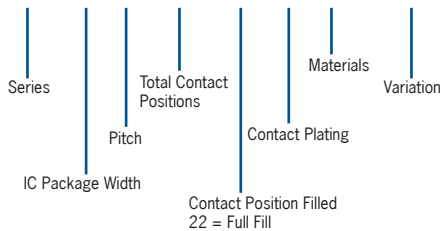
652 SERIES DUAL BEAM SOP

- Open top, Zero Insertion Force design for automatic loading
- Compact size for high board density
- Highly reliable, pre-loaded contacts
- Two points of contact per device lead
- Lead scrub for superior connection and consistent performance
- Three stage device alignment system
- Thru hole design
- Pb free compatible



DESCRIPTION & ORDERING INFORMATION

652 X X XX XX X X WXXX



MATERIALS & SPECIFICATIONS

- Socket Body: PES, PEI or Equivalent
- Contact: Beryllium Copper Alloy
- Contact Plating: Gold over Nickel
- Contact Normal Force: 40~45 grams
- Contact Resistance: 50 mΩ max
- Dielectric: 600V AC for 1 minute
- Temperature Rating: 150°C
- Insulation Resistance: 5,000 MΩ @ 500V DC
- Durability: 10,000 cycles min.

Lead Count	Pitch e (mm)	Package Dimensions (mm)			Part Number	Socket Dimensions (mm)	
		Width (E1)	Lead Tip to Tip (E)	Length (D)		Length (A)	Width (B)
8	1.27	5.23	8.00	5.33 max	652C0082211W	17.20	12.80
8	1.27	5.30	7.90	5.40 max	652C0082211W003	17.20	12.80
16	1.27	7.50	10.40	11.02 max	652D0162212W501	24.00	16.32
20	1.27	7.55	10.40	13.11 max	652D0202212W001	24.30	18.86
32	1.27	7.51	10.47	20.88 max	652D0322211W	18.50	26.30