

## Batteriekontakt / Battery Probe – UEBK-12598

### Material (Material)

Kolben: Messing, vergoldet  
(*Plunger: Brass, gold plated*)

Stifthülse: Messing  
(*Barrel: Brass*)

Feder: Edelstahl  
(*Spring: Stainless Steel*)

### Elektrische Spezifikation (Electrical specification)

Nennstrom: 1 A  
(*Rated current: 1 A*)

Kontaktwiderstand: < 50 mΩ  
(*Contact resistance: < 50 mΩ*)

### Mechanische Spezifikation (Mechanical specification)

Max. Hub: 1,5 mm  
(*Max. travel: 1,5 mm*)

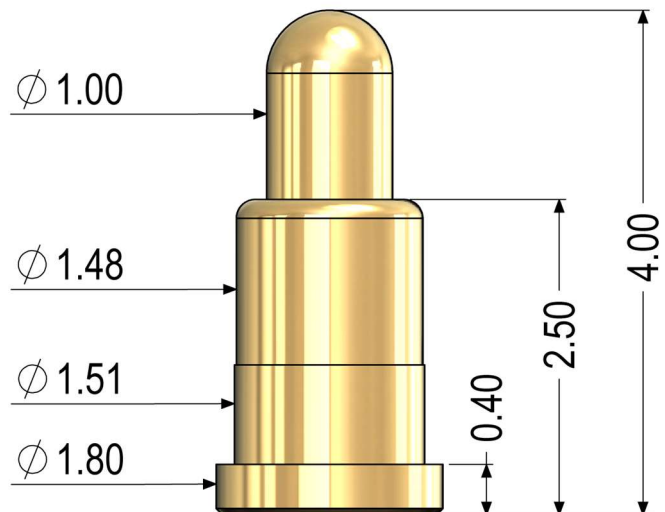
Empfohlener Hub: 1,0 mm  
(*Recommended travel: 1,0 mm*)

Federkraft: 1,0 N bei Empfohlenem Hub  
(*Spring Force: 1,0 N @ recommended travel*)

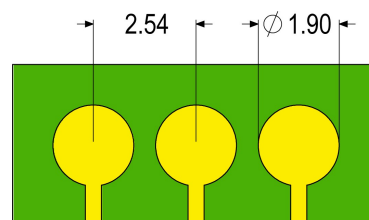
Anschluss: SMD  
(*Connection: SMD*)

### Bestellinformation (Order information)

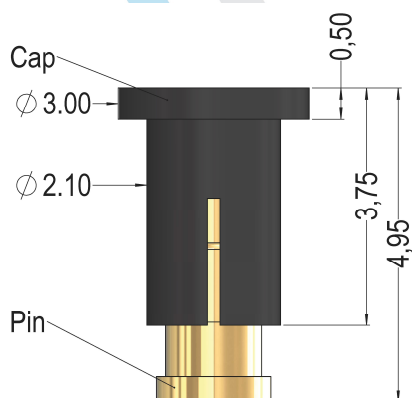
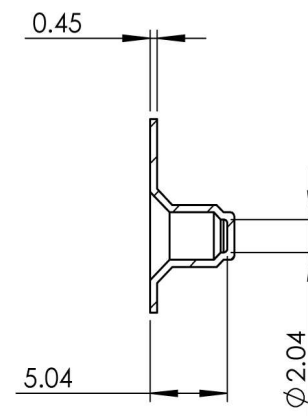
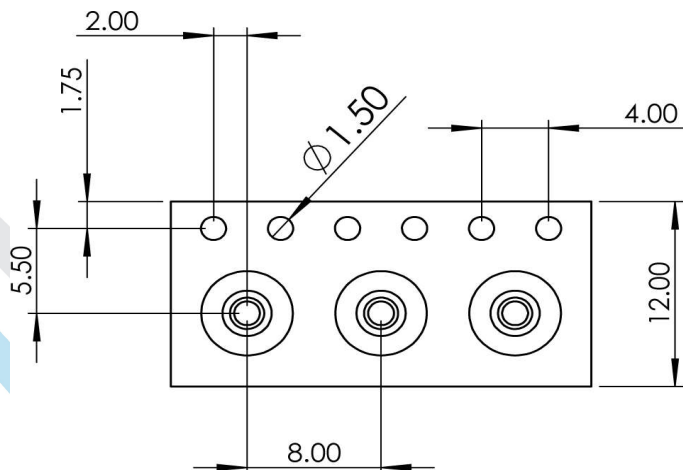
Art. Nr.: UEBK-12598  
(*Art. No.: UEBK-12598*)



### RECOMMENDED FOOTPRINT



## Batteriekontakt / Battery Probe – UEBK-12598 Tape / Reel



### Mechanische Spezifikation (Mechanical specification)

Mindestbestückungsabstand: 3,4 mm

*(Minimum mounting pitch: 3,4 mm)*

Stückzahl: 1500 je Rolle

*(Quantity: 1500 per Reel)*

### Bestellinformation (Order information)

Art. Nr.: UEBK-13266

*(Art. No.: UEBK-13266)*

Seite 2/2  
Stand 1/2021

Änderungen und Irrtümer vorbehalten. Angaben in Millimeter (mm) / Specifications subject to change without notice. Dimensions in Millimeter (mm)